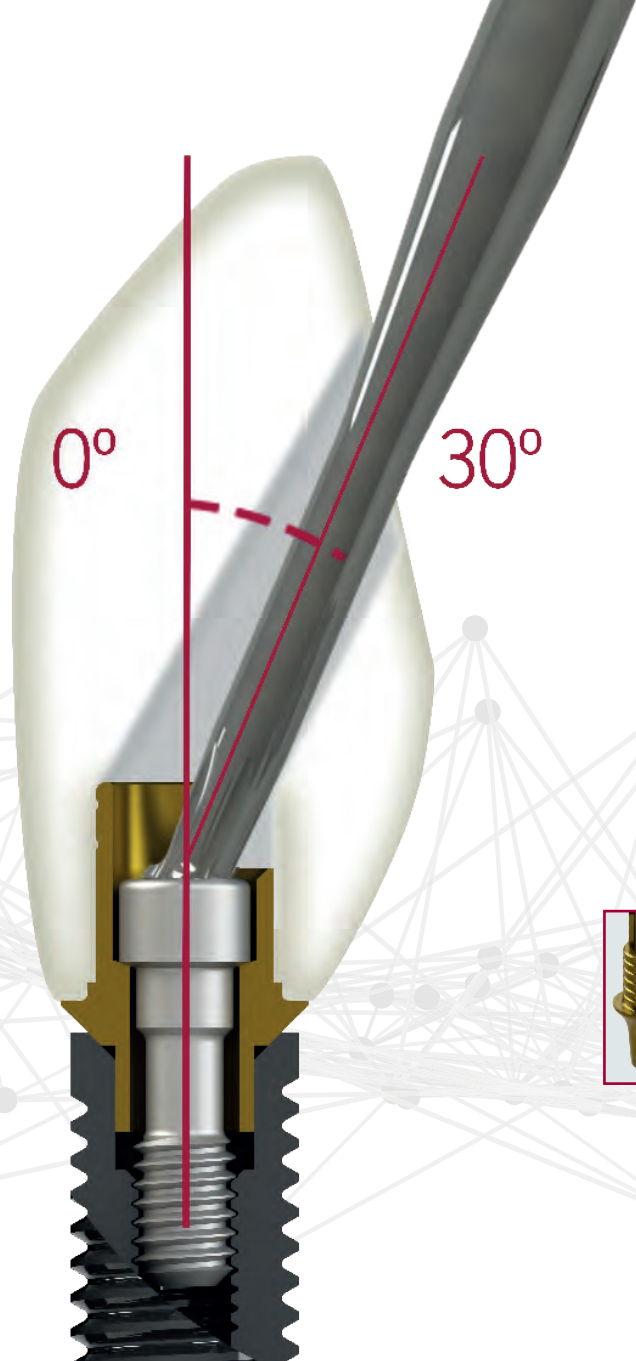
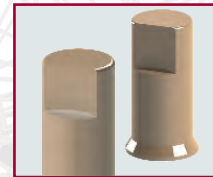


# CAD-CAM SOLUTIONS



DYNAMIC  
ABUTMENT®  
SOLUTIONS

## CAD-CAM SOLUTIONS 2016






## DYNAMIC ABUTMENT® SOLUTIONS

AV. BLONDEL, 54 3º · 25002 · LLEIDA (SPAIN)  
TEL. +34 973 289 580  
das@dynamicabutment.com  
www.dynamicabutment.com

The information included in this catalogue is exclusively addressed to professionals in dental sector.

 Approval of total quality system assurance by notified body, according to Community legislation, for sterile and medical devices Class IIB.  
Class IIB includes: screws, Dynamic Titanium Bases and pre-milled abutment blank.

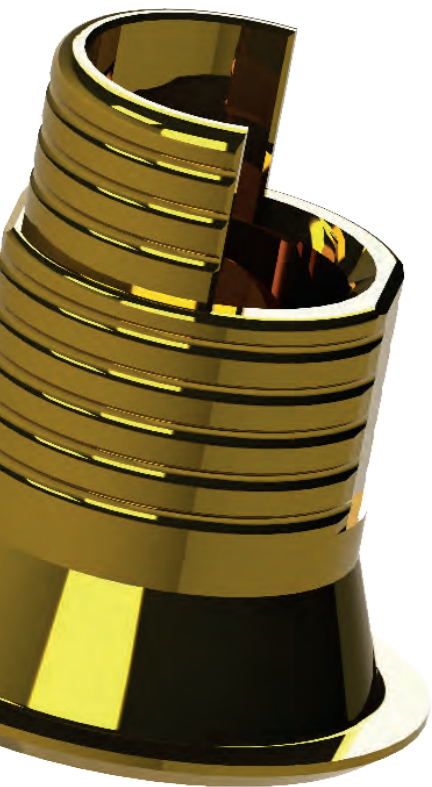


Visit our Online Store to find all our products and compatibilities :

[www.dynamicabutmentstore.com](http://www.dynamicabutmentstore.com)

# INDEX

4	LIST OF 3.0 DYNAMIC TIBASE® COMPATIBILITIES
5	COMPANY
6	RESEARCH & DEVELOPMENT
6	INTERNATIONAL CUSTOMER SERVICE
7	QUALITY CENTER
8	DYNAMIC SYSTEM FOR MILLING STRUCTURES
9	SECURITY & TRACEABILITY
10	3.0 DYNAMIC TIBASE®
11	SCANBODY PEEK FOR 3.0 DYNAMIC TIBASE®
12	SCANNING PROCESS AND CAD SOFTWARE
13	CAD SOFTWARE
14	CAM DESIGN
15	WORK MADE WITH 3SHAPE AND 3.0 DYNAMIC TI-BASE®
16	3.0 DYNAMIC TI-BASE® COMPATIBILITES
47	DYNAMIC SCREWDRIVER / STRAIGHT SCREWS AND SCREWDRIVER
48	ANALOG / COMPLEMENTS
50	DYNAMIC SCREWS
52	STRAIGHT SCREWS
54	TALLADIUM GUARANTEE



## List of **3.0 DYNAMIC TIBASE®** compatibilites

ACE	16	DENTALTECH	25	MPI	37
ADIN	16	DENTIS	26	NEOBIOTECH	38
ALPHABIO	17	DENTIUM	26	NEODENT	38
ANCLADEN	18	DIO IMPLANTS	26	NOBEL BIO CARE	38
ANTHOGYR	18	DSP BIOMEDICAL	27	OSSEOLIFE	39
ARDS	18	ELITE MEDICAL	27	OSSTEM IMPLANT	40
ASTRA	19	EUROTEKNIKA	28	OSTEOPLUS	40
AVINENT	20	GALIMPLANT	29	PHIBO	41
BIOGENESIS	21	GMI	29	PROCLINIC	41
BIOHORIZON	21	GT MEDICAL	30	RADHEX	42
BIOMET 3I	22	HI-TECH	31	SGS	42
BIOLOK	22	IMBIODENT	31	SIGNO VINCES	43
BIONER	22	IMPLANT DIRECT	32	STRAUMANN	44
BTI	23	JDENTALCARE	33	SYBRON IMPLANTS SOLUTIONS	44
BTK	24	KEYSTONE	33	TITANIUM-FIX	45
B&W	24	KLOCKNER	33	TRI DENTAL IMPLANTS	45
CAMLOG	24	LEADER	34	TRINON	45
CONEXÃO SISTEMA DE PRÓTESE	24	MEGAGEN	34	XIVE	46
CORTEX	25	MICRODENT	35	ZIMMER	46
		MIS	36		
		MOZO GRAU	37		

## Company



*Dynamic Abutment® Solutions is dedicated to resolving your problems arising from unfavourable placement of implants. Our R&D&I centre is committed to resolving these issues with the aim of improving the aesthetics and functionality of the prosthesis.*

*You tell us what you need and we listen, adapting and creating you new products to help you stay at the cutting edge of dental technology. This dedication to innovation has led us to develop and bring to market products such as the Dynamic TiBase® to help you create angled channels for your CAD-CAM structures. The system comprises of the Dynamic TiBase®, the Dynamic screw-screwdriver set, scanbodies and digital libraries for all the main CAD software on the market.*

*This catalogue features all of our new technological developments in the digital design field. This provides you with a wide portfolio of products, developed for you as a complete CAD-CAM system, with all the digital resources you'll need to easily resolve complications in a CAD-CAM environment. The Dynamic TiBase® system provides you with a simple solution for correcting angles up to 30°.*

*All technologies used to create angulated solutions, from the most traditional ones to the latest digital techniques, have been developed and patented by our R&D&I centre according the OWN ANGULATED TECHNOLOGY programme. This guarantees the ideal treatment in the elaboration of angled dental prosthesis.*

*Dynamic Abutment® Solutions is devoted to developing quality, innovative products in response to the needs of the dental technology sector.*

Esteban Xam-mar  
Dynamic Abutment Solutions CEO



**Angulated**  
**Own Technology**  
DYNAMIC ABUTMENT® SOLUTIONS

## RESEARCH & DEVELOPMENT



Research and innovation in prosthetics solutions are Dynamic Abutment® Solutions' hallmark and enable us to keep being the leader in angled systems. The proximity to the professionals' needs and the innovative philosophy of our brand allow our technical team to be at the cutting edge of the sector. When developing the product, we give priority to the output of our product, its ease of use and its improvement regarding aesthetic result.

## QUALITY CENTER



Our Quality Center guarantees that all our products fulfill the highest quality levels just as the valid sanitary regulations. It has the latest technologies regarding control and measuring as well as physicochemical treatments of our products. It has an ISO-8 clean room.

## INTERNATIONAL CUSTOMER SERVICE

Our international customer service offers immediate answers to your queries and needs. The international team is focused on projecting and establishing our products and comprehensive services all over the world. Nowadays, we are present in more than 30 countries' markets.



## DYNAMIC SYSTEM FOR MILLING STRUCTURES

The Screwdriver set of 3.0 Dynamic Abutment® System is used in those cases in which rectification of the entry of the screw due to an unfavorable position of the implants is necessary, improving the functionality and aesthetics of the milled prosthesis.

### Dynamic Screwdriver

Screwdriver with hexalobular head, exclusively to the 3.0 Dynamic Abutment® system; lengths: 18, 24, 32mm. Our screwdriver has a contra-angle connection to make it easier to use with a dynamometer or manual ratchet, with the corresponding adaptors or handles.

### Dynamic Screws

They cover all the tread metrics available on the market. They are used with the 3.0 Dynamic Abutment®, the 3.0 Dynamic TiBase® or milled structures with an angled screw channel of up to 30°. There are several lengths for each metric to ease adaptation to the structures. All of them are made of grade 5 titanium

All screws are perfectly identified with their batch and reference numbers, which allow each and every screw to be traced and recorded in the patient's card and in the clinical or laboratory records. Only the 3.0 dynamic screwdriver must be used to install them.

## SECURITY & TRACEABILITY

Dynamic Abutment® Solutions manufactures the “3.0 Dynamic System” range of products, which include the Dynamic Abutment®, the dynamic screw and screwdriver and the Dynamic TiBase®. These are all exclusive and **patented products**. All of them are manufactured under very strict quality guidelines.

With the 3.0 Dynamic System, we provide a card for the patient and labels for the laboratory and the clinic to identify the position in which our system is located. It is extremely important that this information is registered on the patient's record for future repositioning and to know it is necessary to use the screwdriver or the Dynamic System to insert or remove the prosthesis and avoid possible future problems. We exercise complete control over the traceability of our products to fulfil the current health legislation. This helps repositioning the material and inform about the importance of using the appropriate tools when handling the Dynamic System components.

### Exclusivity

All of our products are marked during the manufacturing process to ensure the exclusivity of each piece and control traceability.

This logo is exclusive to Dynamic Abutment® Solutions and guarantees the products are original and have successfully achieved the highest quality standards in our Quality Center.



Card for the patient



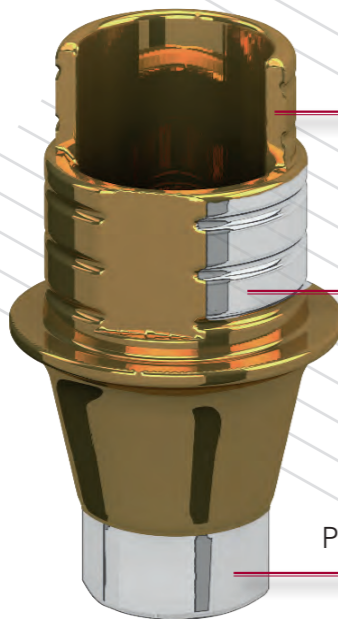
Identifying labels



## 3.0 DYNAMIC TIBASE®

### Technology

To easily solve the common problem of unfavourable implant placement and, in turn, vastly improving the aesthetics of your CAD-CAM structures made from zirconium, metal and PMMA, Dynamic Abutment® Solutions have created Gold Anodized Grade 5 TiBases®. Because the Dynamic TiBase® have been designed to work with the screw-screwdriver set of the 3.0 Dynamic Abutment® system, you can easily correct angles up to 30° and achieve a screw-retained prosthesis even if the implants have been placed inaccurately.



Double height with a side cut that allows the entrance of the angled screw and screwdriver.

Exterior retentions that ensure a good cement grip

Precision machined up to +/- 5 microns

Narrow platform maximum angulation 25°  
Regular/Wide platform maximum angulation 30°

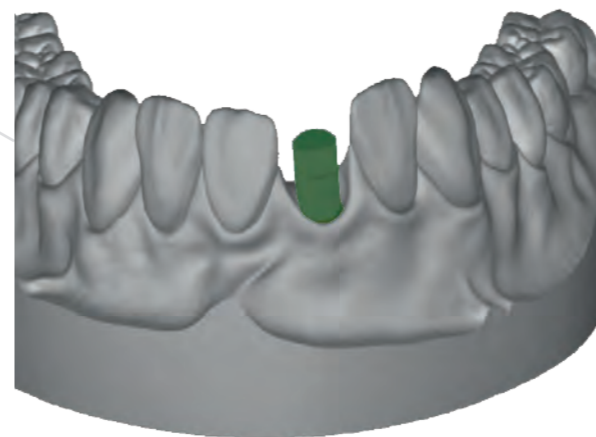
## SCANBODY PEEK FOR 3.0 DYNAMIC TIBASE®

Ref. SBIND3MURP/PK

Ref. SBIND3RP/PK

Ref. SBIND3NP/PK

Ref. SBIND3OCR/PK



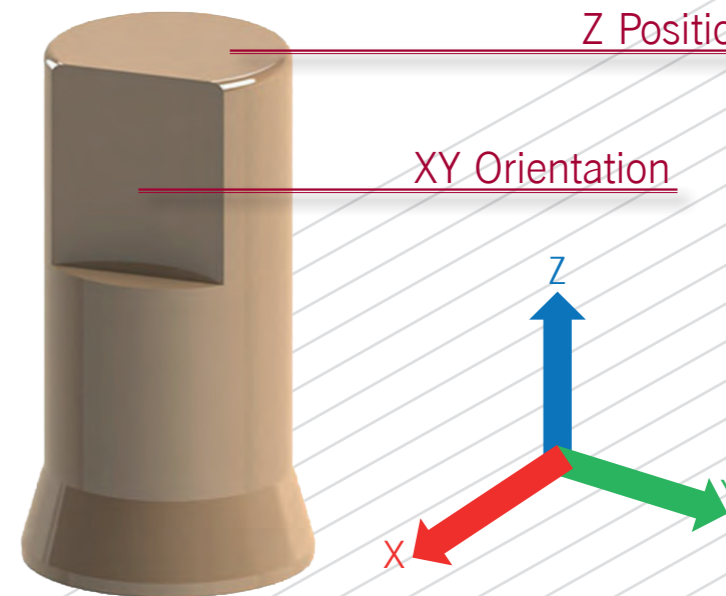
Detect the position and orientation of the respective dental implant or analog in CAD-CAM scanning procedures. Only four scanbodies for more than 200 compatibilities.

Perfect fit



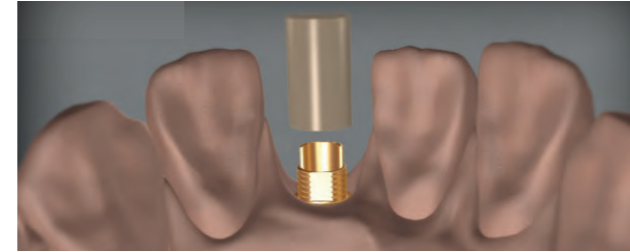
Z Position

XY Orientation

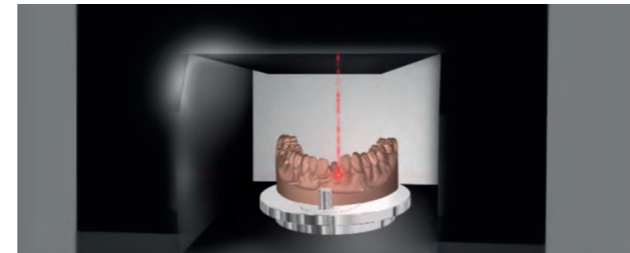


## SCANNING PROCESS AND CAD SOFTWARE

Fix and adjust the scanbody to the 3.0 Dynamic TiBase®, avoiding any rotation thanks to its design.



Then, proceed with the Scanbody scanning and the position of the implant is precisely detected.



Thanks to the versatility of the 3.0 Dynamic TiBase®, extremely aesthetic restorations may be achieved through the angulation of the screw entry, which goes from 0° up to 30° using the screw and screwdriver 3.0 Dynamic Abutment® System.

### Technical Assistance

Our International Customer Service Department (Tel. + 34 973 289580) provides immediate attention for any query.

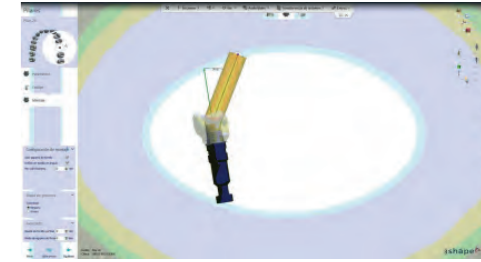
## SOFTWARE CAD

CAD/CAM technology now represents the most innovative approaching in the fixed prostheses development and is a progress over conventional dentistry, allowing extremely precise design and high quality restorations.

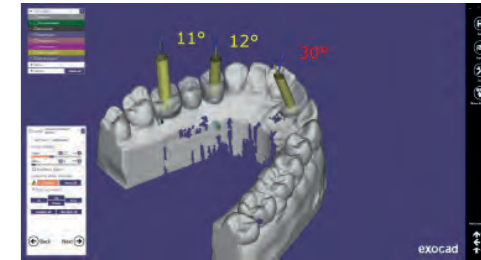
Dynamic TiBases® are a technological contribution to the digital treatment for the angled systems development using CAD/CAM: the Dynamic system includes the Dynamic TiBase®, the dynamic screw-screwdriver set, scanbodies and digital libraries available for the main CAD softwares on the market: Exocad, 3Shape, Dentalwings, Imetric and EGS.

## Available libraries

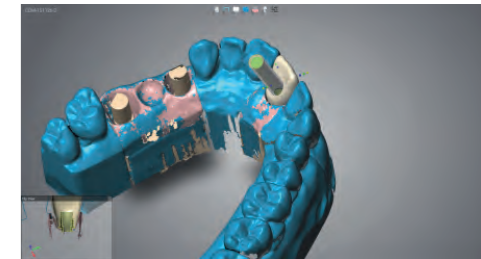
3shape



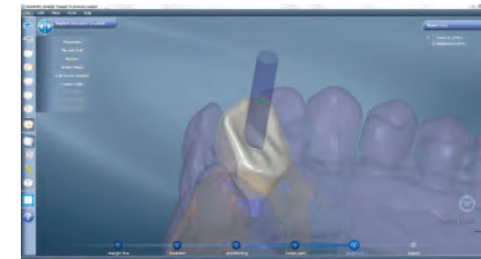
exocad  
Imetric



dental wings



egs  
Enhanced Geometry Solutions



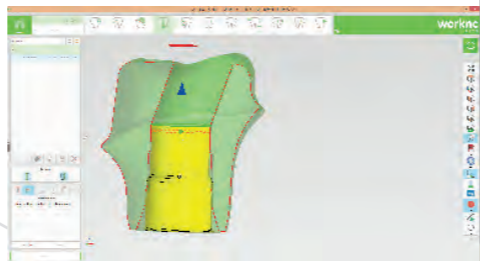
## CAM DESIGN

To ensure you have the most up to date technology at your fingertips, and to guarantee your workflow is as efficient as possible, Dynamic Abutment® Solutions work closely with the main CAM software designers.

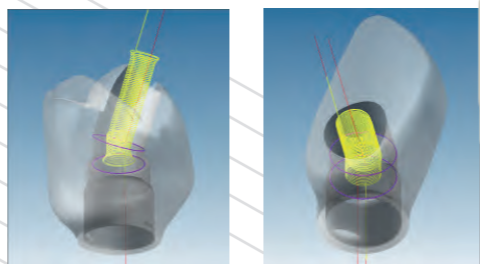


### Tested CAM Software

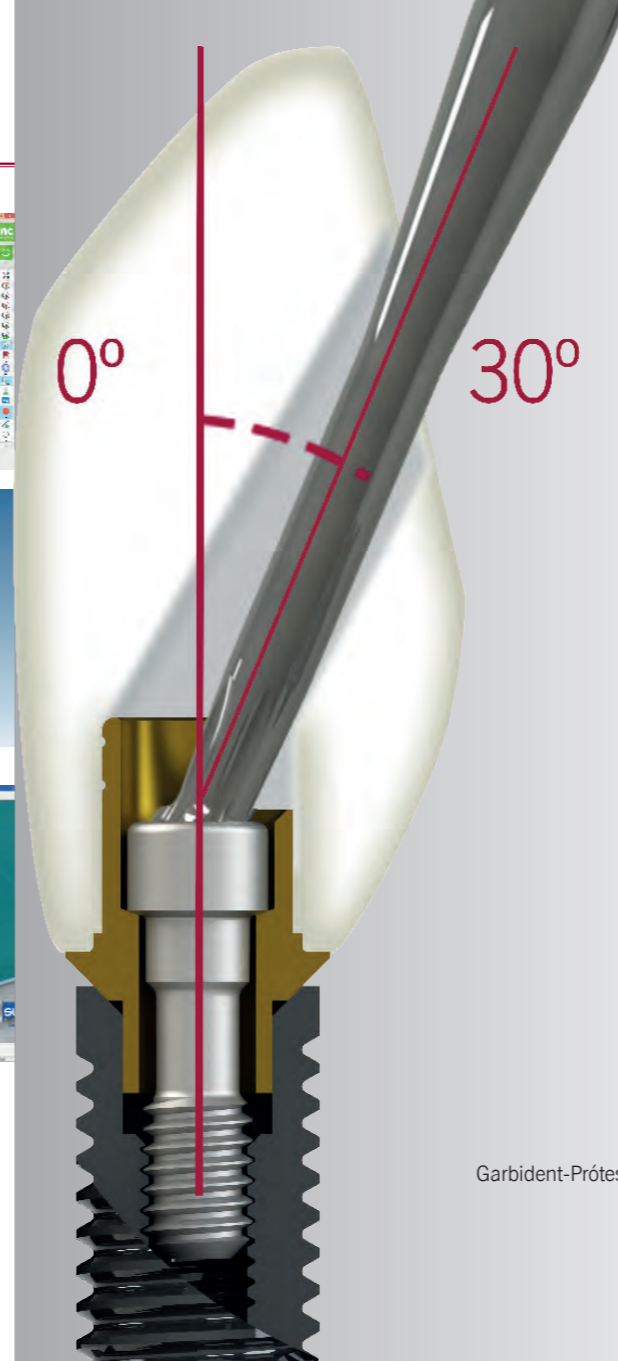
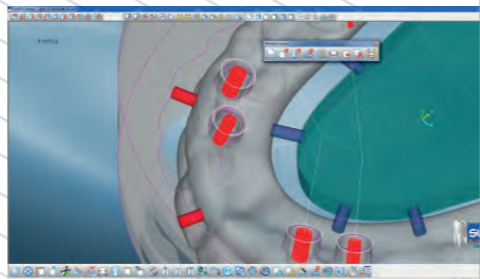
**worknc**  
Dental



**FOLLOW-ME!**  
TECHNOLOGY GROUP  
**hyperDENT**  
COMPACT CLASSIC OPTIONS

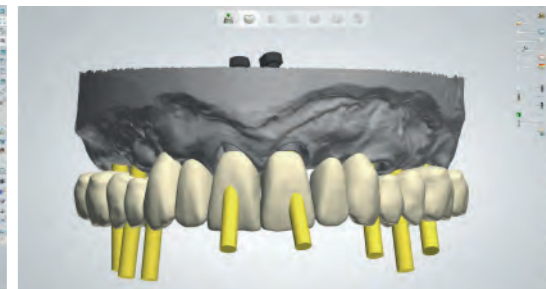
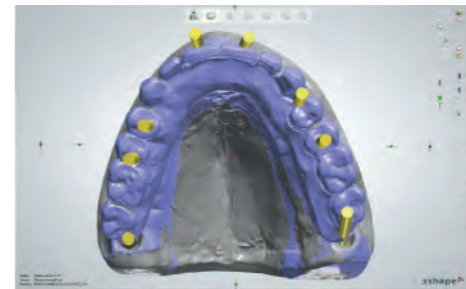


**sum**  
DENTAL  
One step beyond



Author:  
Garbident-Prótesis Dentales  
Spain

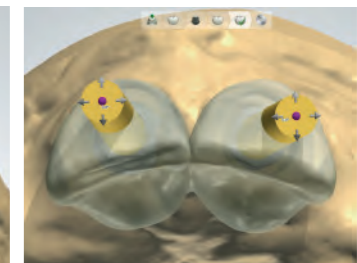
## WORK MADE WITH 3SHAPE AND 3.0 DYNAMIC TI-BASE®



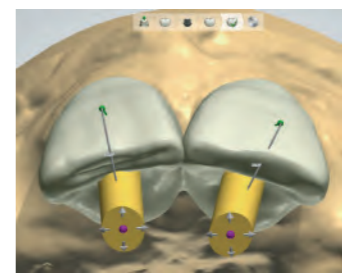
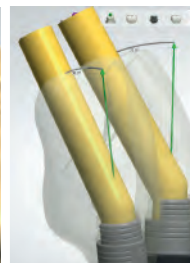
This image shows the angulated chimneys according to the previous design.



See the angle of the screw holes.



Structure design without angulation.



Structure design with 30° angulation.



Result of the restoration after the manufacturing process.



## Compatible with - ACE

### External Hex. - ACE



Platform	Material	Non-Engaging	Engaging	Dynamic screw	Straight screw	Scanbody	Analog	Library code
NP Ø 3,5	Titanium	IND3UCS35/TiA	IND3UCH35/TiA	TPDH16L6	TBRA16L70	SBIND3NP/PK	RUC35	DAS_E_0023
RP Ø 4,1	Titanium	IND3UCS41/TiA	IND3UCH41/TiA	TPDH2L6	TBRA2L70	SBIND3RP/PK	RUC41	DAS_E_0024



	Hex.	h.
NP	2,40	0,70
RP	2,70	0,70

### Infinity TRI-CAM - ACE



Platform	Material	Non-Engaging	Engaging	Dynamic screw	Straight screw	Scanbody	Analog	Library code
Ø 3,5	Titanium	IND3RPLR35/TiA	IND3RPLT35/TiA	TPDH18L75	TRPL18L83	SBIND3NP/PK	RRPL35	DAS_E_0026
Ø 4,3	Titanium	IND3RPLR43/TiA	IND3RPLT43/TiA	TPDH2L90	TRPL2L100	SBIND3RP/PK	RRPL43	DAS_E_0027
Ø 5	Titanium	IND3RPLR50/TiA	IND3RPLT50/TiA	TPDH2L90	TRPL2L100	SBIND3RP/PK	RRPL50	DAS_E_0028



### Infinity Internal Hex. - ACE



Platform	Material	Non-Engaging	Engaging	Dynamic screw	Straight screw	Scanbody	Analog	Library code
Ø 3,5	Titanium	IND3ZIMR35/TiA	IND3ZIMH35/TiA	TPDH17L71	TZIML76	SBIND3NP/PK	RZIM35	DAS_E_0040
Ø 4,5	Titanium	IND3ZIMR45/TiA	IND3ZIMH45/TiA	TPDH17L71	TZIML76	SBIND3RP/PK	RZIM45	DAS_E_0041



## Compatible with - ADIN

### Swell - ADIN



Platform	Material	Non-Engaging	Engaging	Dynamic screw	Straight screw	Scanbody	Analog	Library code
Ø 3,45 <i>Friction-Fit</i>	Titanium	IND3ZIMR35/TiA	IND3ZIMH35/TiA IND3ZIOHNP/TiA	TPDH17L71	TZIML76	SBIND3NP/PK	RZIM35	DAS_E_0040
Ø 3,6 <i>Friction-Fit</i>	Titanium	IND3ZIMR35/TiA	IND3ZIMH35/TiA IND3ZIOHNP/TiA	TPDH17L71	TZIML76	SBIND3NP/PK	RZIM35	DAS_E_0040
Ø 4 <i>Friction-Fit</i>	Titanium	IND3ZIMR35/TiA	IND3ZIMH35/TiA IND3ZIOHNP/TiA	TPDH17L71	TZIML76	SBIND3NP/PK	RZIM35	DAS_E_0040
Ø 4,6 <i>Friction-Fit</i>	Titanium	IND3ZIMR35/TiA	IND3ZIMH35/TiA IND3ZIOHNP/TiA	TPDH17L71	TZIML76	SBIND3NP/PK	RZIM35	DAS_E_0040



## Compatible with - ADIN

### Touareg-S/Touareg-OS - ADIN



Platform	Material	Non-Engaging	Engaging	Dynamic screw	Straight screw	Scanbody	Analog	Library code
Ø 3,5 <i>Friction-Fit</i>	Titanium	IND3ZIMR35/TiA	IND3ZIMH35/TiA IND3ZIOHNP/TiA	TPDH17L71	TZIML76	SBIND3NP/PK	RZIM35	DAS_E_0040
Ø 3,6 <i>Friction-Fit</i>	Titanium	IND3ZIMR35/TiA	IND3ZIMH35/TiA IND3ZIOHNP/TiA	TPDH17L71	TZIML76	SBIND3NP/PK	RZIM35	DAS_E_0040
Ø 4 <i>Friction-Fit</i>	Titanium	IND3ZIMR35/TiA	IND3ZIMH35/TiA IND3ZIOHNP/TiA	TPDH17L71	TZIML76	SBIND3NP/PK	RZIM35	DAS_E_0040
Ø 5 <i>Friction-Fit</i>	Titanium	IND3ZIMR35/TiA	IND3ZIMH35/TiA IND3ZIOHNP/TiA	TPDH17L71	TZIML76	SBIND3NP/PK	RZIM35	DAS_E_0040



### Touareg CloseFit - ADIN



Platform	Material	Non-Engaging	Engaging	Dynamic screw	Straight screw	Scanbody	Analog	Library code
NP	Titanium	IND3ACTRNP/TiA	IND3ACTHNP/TiA	TPDH16L73	TACT16L73	SBIND3NP/PK	RACTNP	DAS_E_0021
RP	Titanium	IND3ACTRRP/TiA	IND3ACTHRP/TiA	TPDH2L75	TACT2L73	SBIND3RP/PK	RACTRP	DAS_E_0022
WP	Titanium	IND3ACTRRP/TiA	IND3ACTHRP/TiA	TPDH2L75	TACT2L73	SBIND3RP/PK	RACTRP	DAS_E_0022



## Compatible with - Compatible con ALPHABIO

### External Alphabio - ALPHABIO



Platform	Material	Non-Engaging	Engaging	Dynamic screw	Straight screw	Scanbody	Analog	Library code
NP	Titanium	IND3UCS35/TiA	IND3UCH35/TiA	TPDH16L6	TBRA16L70	SBIND3NP/PK	RUC35	DAS_E_0023
RP	Titanium	IND3UCS41/TiA	IND3UCH41/TiA	TPDH2L6	TBRA2L70	SBIND3RP/PK	RUC41	DAS_E_0024



	Hex.	h.
NP	2,40	0,70
RP	2,70	0,70

### Internal Alphabio - ALPHABIO



Platform	Material	Non-Engaging	Engaging	Dynamic screw	Straight screw	Scanbody	Analog	Library code
NP	Titanium	IND3ZIMR35/TiA	IND3ZIMH35/TiA	TPDH17L71	TZIML76	SBIND3NP/PK	RZIM35	DAS_E_0040
RP	Titanium	IND3ZIMR35/TiA	IND3ZIMH35/TiA	TPDH17L71	TZIML76	SBIND3NP/PK	RZIM35	DAS_E_0040
WP	Titanium	IND3ZIMR35/TiA	IND3ZIMH35/TiA	TPDH17L71	TZIML76	SBIND3NP/PK	RZIM35	DAS_E_0040



## Compatible with - ANCLADEN

### Anclalock - ANCLADEN



Platform	Material	Non-Engaging	Engaging	Dynamic screw	Straight screw	Scanbody	Analog	Library code
Ø 3,5	Titanium	IND3ZIMR35/TiA	IND3ZIMH35/TiA	TPDH17L71	TZIML76	SBIND3NP/PK	RZIM35	DAS_E_0040



## Compatible with - ANTHOGR

### Anthofit HE - ANTHOGR



Platform	Material	Non-Engaging	Engaging	Dynamic screw	Straight screw	Scanbody	Analog	Library code
R (Ø 4,1)	Titanium	IND3UCS41/TiA	IND3UCH41/TiA	TPDH2L65	TBRA2L70	SBIND3RP/PK	RUC41	DAS_E_0024



	Hex.	h.
RP	2,70	0,70

### Ossfit - ANTHOGR



Platform	Material	Non-Engaging	Engaging	Dynamic screw	Straight screw	Scanbody	Analog	Library code
Ø 4,8	Titanium	IND3OCR48/TiA	IND3OCO48/TiA	TPDH2L67	TSTR2L67	SBIND3OCR/PK	ROC48	DAS_E_0037



## Compatible with - ARDS

### Smart - ARDS



Platform	Material	Non-Engaging	Engaging	Dynamic screw	Straight screw	Scanbody	Analog	Library code
Ø 3,75	Titanium	IND3ZIMR35/TiA	IND3ZIMH35/TiA	TPDH17L71	TZIML76	SBIND3NP/PK	RZIM35	DAS_E_0040



## Compatible with - ARDS

### Classic - ARDS



Platform	Material	Non-Engaging	Engaging	Dynamic screw	Straight screw	Scanbody	Analog	Library code
Ø 3,75	Titanium	IND3ZIMR35/TiA	IND3ZIMH35/TiA	TPDH17L71	TZIML76	SBIND3NP/PK	RZIM35	DAS_E_0040



### Premium - ARDS



Platform	Material	Non-Engaging	Engaging	Dynamic screw	Straight screw	Scanbody	Analog	Library code
Ø 3,75	Titanium	IND3ZIMR35/TiA	IND3ZIMH35/TiA	TPDH17L71	TZIML76	SBIND3NP/PK	RZIM35	DAS_E_0040



## Compatible with - ASTRA

### Aqua - ASTRA



Platform	Material	Non-Engaging	Engaging	Dynamic screw	Straight screw	Scanbody	Analog	Library code
RP	Titanium	IND3ASTRRP/TiA	IND3ASTHRP/TiA	TPDH16L76	TAST16L82	SBIND3RP/PK	RASTRP	DAS_E_0004



### Lilac - ASTRA



Platform	Material	Non-Engaging	Engaging	Dynamic screw	Straight screw	Scanbody	Analog	Library code
WP	Titanium	IND3ASTRWP/TiA	IND3ASTHWP/TiA	TPDH2L90	TAST2L103	SBIND3RP/PK	RASTWP	DAS_E_0005



## Compatible with - ASTRA

### Uni Abutment - ASTRA



Platform	Material	Non-Engaging	Engaging	Dynamic screw	Straight screw	Scanbody	Analog	Library code
UNIVERSAL	Titanium	IND3AEVUA/TiA	---	TPDH18L45	TEV18L45	SBIND3NP/PK	---	DAS_E_0008



### Evolution - ASTRA



Ø	Material	Non-Engaging	Engaging	Dynamic screw	Straight screw	Scanbody	Analog	Library code
3,6	Titanium	IND3AEVR36/TiA	IND3AEVH36/TiA	TPDH16L72	TEV16L75	SBIND3NP/PK	---	DAS_E_0006
4,2	Titanium	IND3AEVR42/TiA	IND3AEVH42/TiA	TPDH18L74	TEV18L76	SBIND3RP/PK	---	DAS_E_0007



## Compatible with - AVINENT

### HE - AVINENT



Platform	Material	Non-Engaging	Engaging	Dynamic screw	Straight screw	Scanbody	Analog	Library code
Ø 3,5	Titanium	IND3UCS35/TiA	IND3UCH35/TiA	TPDH18	---	SBIND3NP/PK	---	DAS_E_0023
Ø 4,1	Titanium	IND3UCS41/TiA	IND3UCH41/TiA	TPDH2L6	TBRA2L70	SBIND3RP/PK	RUC41	DAS_E_0024



	Hex.	h.
RP	2,70	0,70

### HI - AVINENT



Ø	Material	Non-Engaging	Engaging	Dynamic screw	Straight screw	Scanbody	Analog	Library code
3,5	Titanium	IND3ZIMR35/TiA	IND3ZIMH35/TiA	TPDH17L71	TZIML76	SBIND3NP/PK	RZIM35	DAS_E_0040
4,1	Titanium	IND3ZIMR35/TiA	IND3ZIMH35/TiA	TPDH17L71	TZIML76	SBIND3NP/PK	RZIM35	DAS_E_0040



### Transepitelial - AVINENT



Platform	Material	Non-Engaging	Engaging	Dynamic screw	Straight screw	Scanbody	Analog	Library code
RP	Titanium	IND3CO41/TiA	---	TPDH14L39	TMU14L35	SBIND3MURP/PK	RMU48	DAS_E_0025



## Compatible with - BIOGENESIS

### 3Icon - BIOGENESIS



Platform	Material	Non-Engaging	Engaging	Dynamic screw	Straight screw	Scanbody	Analog	Library code
NP	Titanium	IND3UCS35/TiA	IND3UCH35/TiA	TPDH16L6	TBRA16L70	SBIND3NP/PK	RUC35	DAS_E_0023
RP	Titanium	IND3UCS41/TiA	IND3UCH41/TiA	TPDH2L6	TBRA2L70	SBIND3RP/PK	RUC41	DAS_E_0024



	Hex.	h.
NP	2,40	0,70
RP	2,70	0,70

### Aticon - BIOGENESIS



Platform	Material	Non-Engaging	Engaging	Dynamic screw	Straight screw	Scanbody	Analog	Library code
PINK/BLUE	Titanium	IND3ASTRWP/TiA	IND3ASTHWP/TiA	TPDH2L90	TAST2L103	SBIND3RP/PK	RASTWP	DAS_E_0005



### Iticon - BIOGENESIS



Platform	Material	Non-Engaging	Engaging	Dynamic screw	Straight screw	Scanbody	Analog	Library code
RP	Titanium	IND3OCR48/TiA	IND3OCO48/TiA	TPDH2L67	TSTR2L67	SBIND3OCR/PK	ROC48	DAS_E_0037



## Compatible with - BIOHORIZON

### Internal - BIOHORIZON



Platform	Material	Non-Engaging	Engaging	Dynamic screw	Straight screw	Scanbody	Analog	Library code
NP	Titanium	IND3ZIMR35/TiA	IND3ZIMH35/TiA	TPDH17L71	TZIML76	SBIND3NP/PK	RZIM35	DAS_E_0040
RP	Titanium	IND3ZIMR45/TiA	IND3ZIMH45/TiA	TPDH17L71	TZIML76	SBIND3RP/PK	RZIM45	DAS_E_0041



## Compatible with - BIOMET 3i

### Osseotite - BIOMET 3i



Platform	Material	Non-Engaging	Engaging	Dynamic screw	Straight screw	Scanbody	Analog	Library code
Ø 3,4	Titanium	IND3UCS33/TiA	IND3UCH33/TiA	TPDH2L65	T3I2L70	SBIND3NP/PK	RUC33	DAS_E_0003
Ø 4,1	Titanium	IND3UCS41/TiA	IND3UCH41/TiA	TPDH2L6	T3I2L70	SBIND3RP/PK	RUC41	DAS_E_0024



	Hex.	h.
NP	2,55	0,70
RP	2,70	0,70

### Certain - BIOMET 3i



Platform	Material	Non-Engaging	Engaging	Dynamic screw	Straight screw	Scanbody	Analog	Library code
Ø 3,4	Titanium	IND3IRNP/TiA	IND3IHNP/TiA	TPDH16L84	T3I16L84	SBIND3NP/PK	R3IINT34	DAS_E_0001
Ø 4,1	Titanium	IND3IRRP/TiA	IND3IHRP/TiA	TPDH16L84	T3I16L84	SBIND3RP/PK	R3IINT40	DAS_E_0002



## Compatible with - BIOLOK

### External Hexagon - BIOLOK



Platform	Material	Non-Engaging	Engaging	Dynamic screw	Straight screw	Scanbody	Analog	Library code
NP	Titanium	IND3UCS33/TiA	IND3UCH33/TiA	TPDH2L65	T3I2L70	SBIND3NP/PK	RUC33	DAS_E_0003



	Hex.	h.
NP	2,55	0,70

## Compatible with - BIONER

### Ikelt/Bikelt - BIONER



Platform	Material	Non-Engaging	Engaging	Dynamic screw	Straight screw	Scanbody	Analog	Library code
RP	Titanium	IND3UCS41/TiA	IND3UCH41/TiA	TPDH2L6	TBRA2L70	SBIND3RP/PK	RUC41	DAS_E_0024



	Hex.	h.
RP	2,70	0,70

## Compatible with - BIONER

### Hikelt - BIONER



Platform	Material	Non-Engaging	Engaging	Dynamic screw	Straight screw	Scanbody	Analog	Library code
RP Ø 3,8	Titanium	IND3ZIMR35/TiA	IND3ZIMH35/TiA	TPDH17L71	TZIML76	SBIND3NP/PK	RZIM35	DAS_E_0040
RP Ø 4,7	Titanium	IND3ZIMR45/TiA	IND3ZIMH45/TiA	TPDH17L71	TZIML76	SBIND3RP/PK	RZIM45	DAS_E_0041



### TopDM - BIONER



Platform	Material	Non-Engaging	Engaging	Dynamic screw	Straight screw	Scanbody	Analog	Library code
Ø 3,5	Titanium	IND3ACTRNP/TiA	IND3ACTHNP/TiA	TPDH16L73	TACT16L73	SBIND3NP/PK	RACTNP	DAS_E_0021
Ø 4	Titanium	IND3ACTRNP/TiA	IND3ACTHNP/TiA	TPDH16L73	TACT16L73	SBIND3NP/PK	RACTNP	DAS_E_0021
Ø 5	Titanium	IND3ACTRNP/TiA	IND3ACTHNP/TiA	TPDH16L73	TACT16L73	SBIND3NP/PK	RACTNP	DAS_E_0021



### Multi-Unit - BIONER



Platform	Material	Non-Engaging	Engaging	Dynamic screw	Straight screw	Scanbody	Analog	Library code
RP	Titanium	IND3CO41/TiA	---	TPDH14L39	TMU14L35	SBIND3MURP/PK	RMU48	DAS_E_0025



## Compatible with - BTI

### External Connection- BTI



Platform	Material	Non-Engaging	Engaging	Dynamic screw	Straight screw	Scanbody	Analog	Library code
TINY Ø 3,5	Titanium	IND3UCS35BT/TiA	IND3UCH35BT/TiA	TPDH2L51	---	SBIND3NP/PK	RUC35BT	DAS_E_0009
UNIVERSAL Ø 4,1	Titanium	IND3UCS41/TiA	IND3UCH41/TiA	TPDH2L6	T3I2L70	SBIND3RP/PK	RUC41	DAS_E_0024



	Hex.	h.
TINY	2,50	1,10
RP	2,70	0,70

### Internal Connection - BTI



Platform	Material	Non-Engaging	Engaging	Dynamic screw	Straight screw	Scanbody	Analog	Library code
UNIVERSAL Ø 4,1	Titanium	IND3BTIRRP/TiA	IND3BTIHRP/TiA	TPDH18L65	TBT18L68	SBIND3RP/PK	RBT41	DAS_E_0010



## Compatible with - BTK

### Klassic/Konic - BTK



Platform	Material	Non-Engaging	Engaging	Dynamic screw	Straight screw	Scanbody	Analog	Library code
NP	Titanium	IND3UCS33/TiA	IND3UCH33/TiA	TPDH18L65	TBT118L68	SBIND3NP/PK	---	DAS_E_0003
RP	Titanium	IND3UCS41/TiA	IND3UCH41/TiA	TPDH2L6	TBRA2L70	SBIND3RP/PK	RUC41	DAS_E_0024



	Hex.	h.
RP	2,70	0,70

## Compatible with - B&W

### External Connection - B&W



Platform	Material	Non-Engaging	Engaging	Dynamic screw	Straight screw	Scanbody	Analog	Library code
RP	Titanium	IND3UCS41/TiA	IND3UCH41/TiA	TPDH2L6	TBRA2L70	SBIND3RP/PK	RUC41	DAS_E_0024



	Hex.	h.
RP	2,70	0,70

## Compatible with - CAMLOG

### Screw-Line - CAMLOG

\*Maximum angulation 20°



Platform	Material	Non-Engaging	Engaging	Dynamic screw	Straight screw	Scanbody	Analog	Library code
Ø 3,8*	Titanium	IND3CAMR38/TiA	IND3CAMH38/TiA	TPDH16L94	TCAM16L105	SBIND3NP/PK	---	DAS_E_0011
Ø 4,3*	Titanium	IND3CAMR43/TiA	IND3CAMH43/TiA	TPDH16L94	TCAM16L105	SBIND3RP/PK	---	DAS_E_0012



## Compatible with - CONEXÃO SISTEMA DE PRÓTESE

### AR-Morse - CONEXÃO SISTEMA DE PRÓTESE



Platform	Material	Non-Engaging	Engaging	Dynamic screw	Straight screw	Scanbody	Analog	Library code
Ø 3,75	Titanium	IND3ACTRNP/TiA	IND3ACTHNP/TiA	TPDH16L73	TACT16L73	SBIND3NP/PK	RACTNP	DAS_E_0021
Ø 4	Titanium	IND3ACTRNP/TiA	IND3ACTHNP/TiA	TPDH16L73	TACT16L73	SBIND3NP/PK	RACTNP	DAS_E_0021



## Compatible with - CORTEX

### Dynamix - CORTEX



Platform	Material	Non-Engaging	Engaging	Dynamic screw	Straight screw	Scanbody	Analog	Library code
Ø 4,2	Titanium	IND3ZIMR35/TiA	IND3ZIMH35/TiA	TPDH17L71	TZIML76	SBIND3NP/PK	RZIM35	DAS_E_0040



### Classix - CORTEX



Ø 4,2	Titanium	IND3ZIMR35/TiA	IND3ZIMH35/TiA	TPDH17L71	TZIML76	SBIND3NP/PK	RZIM35	DAS_E_0040
-------	----------	----------------	----------------	-----------	---------	-------------	--------	------------



### Saturn - CORTEX



Ø 4,2	Titanium	IND3ZIMR35/TiA	IND3ZIMH35/TiA	TPDH17L71	TZIML76	SBIND3NP/PK	RZIM35	DAS_E_0040
-------	----------	----------------	----------------	-----------	---------	-------------	--------	------------



## Compatible with - DENTALTECH

### Implogic - DENTALTECH



Platform	Material	Non-Engaging	Engaging	Dynamic screw	Straight screw	Scanbody	Analog	Library code
Ø 4,5	Titanium	IND3ZIMR45/TiA	IND3ZIMH45/TiA	TPDH17L71	TZIML76	SBIND3RP/PK	RZIM45	DAS_E_0041



## Compatible with - DENTIS

### S-Clean - DENTIS



Platform	Material	Non-Engaging	Engaging	Dynamic screw	Straight screw	Scanbody	Analog	Library code
MINI RP WP	Titanium	IND3OTSRRP/TiA	IND3OTSHRP/TiA	TPDH2L79	---	SBIND3RP/PK	---	DAS_E_0030



## Compatible with - DENTIUM

### SuperLine and Implantum - DENTIUM



Platform	Material	Non-Engaging	Engaging	Dynamic screw	Straight screw	Scanbody	Analog	Library code
Ø3,6	Titanium	IND3OTSRRP/TiA	IND3OTSHRP/TiA	TPDH2L79	---	SBIND3RP/PK	---	DAS_E_0030
Ø4	Titanium	IND3OTSRRP/TiA	IND3OTSHRP/TiA	TPDH2L79	---	SBIND3RP/PK	---	DAS_E_0030
Ø4,5	Titanium	IND3OTSRRP/TiA	IND3OTSHRP/TiA	TPDH2L79	---	SBIND3RP/PK	---	DAS_E_0030
Ø5	Titanium	IND3OTSRRP/TiA	IND3OTSHRP/TiA	TPDH2L79	---	SBIND3RP/PK	---	DAS_E_0030
Ø6	Titanium	IND3OTSRRP/TiA	IND3OTSHRP/TiA	TPDH2L79	---	SBIND3RP/PK	---	DAS_E_0030



### Simpleline II - DENTIUM



Ø 4,8	Titanium	IND3OCR48/TiA	IND3OCO48/TiA	TPDH2L67	TSTR2L67	SBIND3OCR/PK	---	DAS_E_0037
-------	----------	---------------	---------------	----------	----------	--------------	-----	------------



## Compatible with - DIO IMPLANTS

### SM System - DIO IMPLANTS



Platform	Material	Non-Engaging	Engaging	Dynamic screw	Straight screw	Scanbody	Analog	Library code
RP WP	Titanium	IND3DIORRP/TiA	IND3DIOHRP/TiA	TPDH2L74	TDSM2L74	SBIND3RP/PK	---	DAS_E_0013



## Compatible with - DIO IMPLANTS

### UF II Narrow - DIO IMPLANTS



Platform	Material	Non-Engaging	Engaging	Dynamic screw	Straight screw	Scanbody	Analog	Library code
NP	Titanium	IND3DUFRNP/TiA	IND3DUFHNP/TiA	TPDH14L67	---	SBIND3NP/PK	---	DAS_E_0014



### UF II - DIO IMPLANTS



RP	Titanium	IND3OTSRRP/TiA	IND3OTSHRP/TiA	TPDH2L79	---	SBIND3RP/PK	---	DAS_E_0030
----	----------	----------------	----------------	----------	-----	-------------	-----	------------



### External - DIO IMPLANTS



NP Ø 3,5	Titanium	IND3UCS35/TiA	IND3UCH35/TiA	TPDH16L6	TBRA16L70	SBIND3NP/PK	RUC35	DAS_E_0023
RP Ø 4,1	Titanium	IND3UCS41/TiA	IND3UCH41/TiA	TPDH2L6	TBRA2L70	SBIND3RP/PK	RUC41	DAS_E_0024



Hex.	h.
NP 2,40	0,70
RP 2,70	0,70

## Compatible with - DSP BIOMEDICAL

### External Hexagon - DSP BIOMEDICAL



Platform	Material	Non-Engaging	Engaging	Dynamic screw	Straight screw	Scanbody	Analog	Library code
RP	Titanium	IND3UCS41/TiA	IND3UCH41/TiA	TPDH2L65	TBRA2L70	SBIND3RP/PK	RUC41	DAS_E_0024



Hex.	h.
RP 2,70	0,70

## Compatible with - ELITE MEDICAL

### External Connection - ELITE MEDICAL



Platform	Material	Non-Engaging	Engaging	Dynamic screw	Straight screw	Scanbody	Analog	Library code
NP	Titanium	IND3UCS35/TiA	IND3UCH35/TiA	TPDH16L6	TBRA16L70	SBIND3NP/PK	RUC35	DAS_E_0023
RP	Titanium	IND3UCS41/TiA	IND3UCH41/TiA	TPDH2L6	TBRA2L70	SBIND3RP/PK	RUC41	DAS_E_0024



Hex.	h.
NP 2,40	0,70
RP 2,70	0,70

## Compatible with - EUROTEKNIKA

### Naturactis - EUROTEKNIKA



Platform	Material	Non-Engaging	Engaging	Dynamic screw	Straight screw	Scanbody	Analog	Library code
Ø3,5	Titanium	IND3ASTRRP/TiA	IND3ASTHRP/TiA	TPDH16L76	TAST16L82	SBIND3RP/PK	RASTRP	DAS_E_0004
Ø4	Titanium	IND3ASTRRP/TiA	IND3ASTHRP/TiA	TPDH16L76	TAST16L82	SBIND3RP/PK	RASTRP	DAS_E_0004
Ø4,5	Titanium	IND3ASTRRP/TiA	IND3ASTHRP/TiA	TPDH16L76	TAST16L82	SBIND3RP/PK	RASTRP	DAS_E_0004
Ø5	Titanium	IND3ASTRRP/TiA	IND3ASTHRP/TiA	TPDH16L76	TAST16L82	SBIND3RP/PK	RASTRP	DAS_E_0004



### Uneva - EUROTEKNIKA



Platform	Material	Non-Engaging	Engaging	Dynamic screw	TBRA2L70	SBIND3RP/PK	RUC41	Library code
Ø3,6	Titanium	IND3UCS41/TiA	IND3UCH41/TiA	TPDH2L6	TBRA2L70	SBIND3RP/PK	RUC41	DAS_E_0024
Ø4,1	Titanium	IND3UCS41/TiA	IND3UCH41/TiA	TPDH2L6	TBRA2L70	SBIND3RP/PK	RUC41	DAS_E_0024



	Hex.	h.
RP	2,70	0,70

### Uneva (Platform Switching) - EUROTEKNIKA



Platform	Material	Non-Engaging	Engaging	Dynamic screw	TBRA2L70	SBIND3RP/PK	Library code	
Ø4,8	Titanium	IND3UCS41/TiA	IND3UCH41/TiA	TPDH2L6	TBRA2L70	SBIND3RP/PK	---	DAS_E_0024
Ø6	Titanium	IND3UCS41/TiA	IND3UCH41/TiA	TPDH2L6	TBRA2L70	SBIND3RP/PK	---	DAS_E_0024



	Hex.	h.
RP	2,70	0,70

### Natea - EUROTEKNIKA



Platform	Material	Non-Engaging	Engaging	Dynamic screw	Straight screw	SBIND3RP/PK	RASTRP	Library code
NP	Titanium	IND3ASTRRP/TiA	IND3ASTHRP/TiA	TPDH16L76	TAST16L82	SBIND3RP/PK	RASTRP	DAS_E_0004
RP	Titanium	IND3ASTRRP/TiA	IND3ASTHRP/TiA	TPDH16L76	TAST16L82	SBIND3RP/PK	RASTRP	DAS_E_0004
WP	Titanium	IND3ASTRWP/TiA	IND3ASTHWP/TiA	TPDH2L90	TAST2L103	SBIND3RP/PK	RASTWP	DAS_E_0005



### Aesthetica - EUROTEKNIKA



Platform	Material	Non-Engaging	Engaging	Dynamic screw	TSTR2L67	SBIND3OCR/PK	ROC48	Library code
Ø 4,8	Titanium	IND3OCR48/TiA	IND3OCO48/TiA	TPDH2L67	TSTR2L67	SBIND3OCR/PK	ROC48	DAS_E_0037



## Compatible with - EUROTEKNIKA

### Naturall - EUROTEKNIKA



Platform	Material	Non-Engaging	Engaging	Dynamic screw	Straight screw	Scanbody	Analog	Library code
NP	Titanium	IND3ASTRRP/TiA	IND3ASTHRP/TiA	TPDH16L76	TAST16L82	SBIND3RP/PK	RASTRP	DAS_E_0004
RP	Titanium	IND3ASTRRP/TiA	IND3ASTHRP/TiA	TPDH16L76	TAST16L82	SBIND3RP/PK	RASTRP	DAS_E_0004
WP	Titanium	IND3ASTRWP/TiA	IND3ASTHWP/TiA	TPDH2L90	TAST2L103	SBIND3RP/PK	RASTWP	DAS_E_0005



## Compatible with - GALIMPLANT

### External Connection - GALIMPLANT



Platform	Material	Non-Engaging	Engaging	Dynamic screw	Straight screw	Scanbody	Analog	Library code
RP	Titanium	IND3UCS41/TiA	IND3UCH41/TiA	TPDH2L65	TBRA2L70	SBIND3RP/PK	RUC41	DAS_E_0024



	Hex.	h.
RP	2,70	0,70

### Internal Connection - GALIMPLANT



Platform	Material	Non-Engaging	Engaging	Dynamic screw	Straight screw	SBIND3RP/PK	RASTRP	Library code
RP	Titanium	IND3ASTRRP/TiA	IND3ASTHRP/TiA	TPDH16L76	TAST16L82	SBIND3RP/PK	RASTRP	DAS_E_0004



## Compatible with - GMI

### Phoenix - GMI



Platform	Material	Non-Engaging	Engaging	Dynamic screw	Straight screw	Scanbody	Analog	Library code
RP	Titanium	IND3UCS41/TiA	IND3UCH41/TiA	TPDH2L65	TBRA2L70	SBIND3RP/PK	RUC41	DAS_E_0024



	Hex.	h.
RP	2,70	0,70

## Compatible with - GMI

### Frontier - GMI



Platform	Material	Non-Engaging	Engaging	Dynamic screw	Straight screw	Scanbody	Analog	Library code
STANDAR	Titanium	IND3ZIMR35/TiA	IND3ZIMH35/TiA	TPDH18L75	---	SBIND3NP/PK	---	DAS_E_0040
WP	Titanium	IND3ZIMR45/TiA	IND3ZIMH45/TiA	TPDH18L75	---	SBIND3RP/PK	---	DAS_E_0041



## Compatible with - GT MEDICAL

### Best Fit Internal Octagon - GT MEDICAL



Platform	Material	Non-Engaging	Engaging	Dynamic screw	Straight screw	Scanbody	Analog	Library code
RP	Titanium	IND3OCR48/TiA	IND3OCO48/TiA	TPDH2L67	TSTR2L67	SBIND3OCR/PK	ROC48	DAS_E_0037



### Best Fit Internal Hexagon - GT MEDICAL



Platform	Material	Non-Engaging	Engaging	Dynamic screw	Straight screw	Scanbody	Analog	Library code
WP	Titanium	IND3ASTRWP/TiA	IND3ASTHWP/TiA	TPDH2L90	TAST2L103	SBIND3RP/PK	---	DAS_E_0005



### Best Fit External Hexagon - GT MEDICAL



Platform	Material	Non-Engaging	Engaging	Dynamic screw	Straight screw	Scanbody	Analog	Library code
NP	Titanium	IND3UCS35/TiA	IND3UCH35/TiA	TPDH16L6	TBRA16L70	SBIND3NP/PK	RUC35	DAS_E_0023
RP	Titanium	IND3UCS41/TiA	IND3UCH41/TiA	TPDH2L6	TBRA2L70	SBIND3RP/PK	RUC41	DAS_E_0024



	Hex.	h.
NP	2,40	0,70
RP	2,70	0,70

## Compatible with - HI-TECH

### Self Thread SLT - HI-TECH



Platform	Material	Non-Engaging	Engaging	Dynamic screw	Straight screw	Scanbody	Analog	Library code
Ø3,75	Titanium	IND3ZIMR35/TiA	IND3ZIMH35/TiA	TPDH17L71	TZIML76	SBIND3NP/PK	RZIM35	DAS_E_0040



### Self Thread GTI - HI-TECH



Platform	Material	Non-Engaging	Engaging	Dynamic screw	Straight screw	Scanbody	Analog	Library code
Ø4,2	Titanium	IND3ZIMR45/TiA	IND3ZIMH45/TiA	TPDH17L71	TZIML76	SBIND3RP/PK	RZIM45	DAS_E_0041



### LGI Plus - HI-TECH



Platform	Material	Non-Engaging	Engaging	Dynamic screw	Straight screw	Scanbody	Analog	Library code
Ø4,3	Titanium	IND3ZIMR35/TiA	IND3ZIMH35/TiA	TPDH17L71	TZIML76	SBIND3NP/PK	RZIM35	DAS_E_0040



## Compatible with - IMBIODENT

### Imbiocent - IMBIODENT



Platform	Material	Non-Engaging	Engaging	Dynamic screw	Straight screw	Scanbody	Analog	Library code
NP	Titanium	IND3BONRNP/TiA	IND3BONHNP/TiA	TPDH16L78	TBON16L79	SBIND3NP/PK	RBONNP	DAS_E_0033
RP	Titanium	IND3BONRRP/TiA	IND3BONHRP/TiA	TPDH16L78	TBON16L79	SBIND3RP/PK	RBONRP	DAS_E_0035





## Compatible with - IMPLANT DIRECT

### Replus-Replant-Reactive - IMPLANT DIRECT



Platform	Material	Non-Engaging	Engaging	Dynamic screw	Straight screw	Scanbody	Analog	Library code
NP	Titanium	IND3RPLR35/TiA	IND3RPLT35/TiA	TPDH18L75	TRPL18L83	SBIND3NP/PK	---	DAS_E_0026
RP	Titanium	IND3RPLR43/TiA	IND3RPLT43/TiA	TPDH2L90	TRPL2L100	SBIND3RP/PK	---	DAS_E_0027
WP	Titanium	IND3RPLR50/TiA	IND3RPLT50/TiA	TPDH2L90	TRPL2L100	SBIND3RP/PK	---	DAS_E_0028



### Legacy - IMPLANT DIRECT



NP	Titanium	IND3ZIMR35/TiA	IND3ZIMH35/TiA	TPDH17L71	TZIML76	SBIND3NP/PK	RZIM35	DAS_E_0040
RP	Titanium	IND3ZIMR45/TiA	IND3ZIMH45/TiA	TPDH17L71	TZIML76	SBIND3RP/PK	RZIM45	DAS_E_0041



### Swishplant / Swishplus - IMPLANT DIRECT



RP	Titanium	IND3OCR48/TiA	IND3OCO48/TiA	TPDH2L67	TSTR2L67	SBIND3OCR/PK	ROC48	DAS_E_0037
----	----------	---------------	---------------	----------	----------	--------------	-------	------------



### Interactive - IMPLANT DIRECT



NP	Titanium	IND3ACTRNP/TiA	IND3ACTHNP/TiA	TPDH16L73	TACT16L73	SBIND3NP/PK	RACTNP	DAS_E_0021
RP	Titanium	IND3ACTRRP/TiA	IND3ACTHRP/TiA	TPDH2L75	TACT2L73	SBIND3RP/PK	RACTRP	DAS_E_0022



## Compatible with - JDENTALCARE

### JDEvolution - JDENTALCARE



Platform	Material	Non-Engaging	Engaging	Dynamic screw	Straight screw	Scanbody	Analog	Library code
Ø 3,7	Titanium	IND3ZIMR35/TiA	IND3ZIMH35/TiA	TPDH17L71	TZIML76	SBIND3NP/PK	RZIM35	DAS_E_0040
Ø 4,3	Titanium	IND3ZIMR35/TiA	IND3ZIMH35/TiA	TPDH17L71	TZIML76	SBIND3NP/PK	RZIM35	DAS_E_0040
Ø 5	Titanium	IND3ZIMR35/TiA	IND3ZIMH35/TiA	TPDH17L71	TZIML76	SBIND3NP/PK	RZIM35	DAS_E_0040
Ø 6	Titanium	IND3ZIMR35/TiA	IND3ZIMH35/TiA	TPDH17L71	TZIML76	SBIND3NP/PK	RZIM35	DAS_E_0040



## Compatible with - KEYSTONE

### Restore - KEYSTONE



Platform	Material	Non-Engaging	Engaging	Dynamic screw	Straight screw	Scanbody	Analog	Library code
RP	Titanium	IND3UCS41/TiA	IND3UCH41/TiA	TPDH2L6	TBRA2L70	SBIND3RP/PK	RUC41	DAS_E_0024



	Hex.	h.
RP	2,70	0,70

## Compatible with - KLOCKNER

### KL - KLOCKNER



Platform	Material	Non-Engaging	Engaging	Dynamic screw	Straight screw	Scanbody	Analog	Library code
NP	Titanium	IND3UCS35/TiA	IND3UCH35/TiA	TPDH16L6	TBRA16L70	SBIND3NP/PK	RUC35	DAS_E_0023
RP	Titanium	IND3UCS41/TiA	IND3UCH41/TiA	TPDH2L6	T3I2L70	SBIND3RP/PK	RUC41	DAS_E_0024



	Hex.	h.
NP	2,40	0,70
RP	2,70	0,70

## Compatible with - LEADER

### Tixos Internal Hexagon - LEADER



Platform	Material	Non-Engaging	Engaging	Dynamic screw	Straight screw	Scanbody	Analog	Library code
Ø 3,5	Titanium	IND3ZIMR35/TiA	IND3ZIMH35/TiA	TPDH17L71	TZIML76	SBIND3NP/PK	RZIM35	DAS_E_0040
Ø 4	Titanium	IND3ZIMR45/TiA	IND3ZIMH45/TiA	TPDH17L71	TZIML76	SBIND3RP/PK	RZIM45	DAS_E_0041



### Tixos External Hexagon - LEADER



Ø 4,1	Titanium	IND3UCS41/TiA	IND3UCH41/TiA	TPDH2L6	TBRA2L70	SBIND3RP/PK	RUC41	DAS_E_0024
-------	----------	---------------	---------------	---------	----------	-------------	-------	------------



	Hex.	h.
RP	2,70	0,70

## Compatible with - MEGAGEN

### AnyRidge - MEGAGEN



Platform	Material	Non-Engaging	Engaging	Dynamic screw	Straight screw	Scanbody	Analog	Library code
SMALL RP WP	Titanium	IND3MARRRP/TiA	IND3MARHRP/TiA	TPDH18L80	---	SBIND3RP/PK	---	DAS_E_0015



### AnyOne Internal - MEGAGEN



GENERAL	Titanium	IND3OTSRRP/TiA	IND3OTSHRP/TiA	TPDH2L79	---	SBIND3RP/PK	---	DAS_E_0030
---------	----------	----------------	----------------	----------	-----	-------------	-----	------------



## Compatible with - MEGAGEN

### AnyOne External - MEGAGEN



Platform	Material	Non-Engaging	Engaging	Dynamic screw	Straight screw	Scanbody	Analog	Library code
SMALL Ø 3,5	Titanium	IND3UCS35/TiA	IND3UCH35/TiA	TPDH16L6	TBRA16L70	SBIND3NP/PK	RUC35	DAS_E_0023
RP Ø 4,1	Titanium	IND3UCS41/TiA	IND3UCH41/TiA	TPDH2L6	TBRA2L70	SBIND3NP/PK	RUC41	DAS_E_0024
RP Ø 4,5	Titanium	IND3UCS41/TiA	IND3UCH41/TiA	TPDH2L6	TBRA2L70	SBIND3NP/PK	RUC41	DAS_E_0024



	Hex.	h.
SMALL	2,40	0,70
RP	2,70	0,70

## Compatible with - MICRODENT

### Mini - MICRODENT



Platform	Material	Non-Engaging	Engaging	Dynamic screw	Straight screw	Scanbody	Analog	Library code
RP	Titanium	IND3UCS33/TiA	IND3UCH33/TiA	TPDH18	---	SBIND3NP/PK	---	DAS_E_0003



	Hex.	h.
NP	2,55	0,70

### Universal - MICRODENT



RP	Titanium	IND3UCS41/TiA	IND3UCH41/TiA	TPDH2L6	TBRA2L70	SBIND3RP/PK	RUC41	DAS_E_0024
----	----------	---------------	---------------	---------	----------	-------------	-------	------------



	Hex.	h.
RP	2,70	0,70

### Ektos - MICRODENT



Ø 3,5	Titanium	IND3ZIMR35/TiA	IND3ZIMH35/TiA	TPDH17L71	TZIML76	SBIND3NP/PK	RZIM35	DAS_E_0040
-------	----------	----------------	----------------	-----------	---------	-------------	--------	------------



## Compatible with - MIS

### Lance - MIS



Platform	Material	Non-Engaging	Engaging	Dynamic screw	Straight screw	Scanbody	Analog	Library code
ST	Titanium	IND3UCS41/TiA	IND3UCH41/TiA	TPDH2L6	TBRA2L70	SBIND3RP/PK	RUC41	DAS_E_0024



	Hex.	h.
RP	2,70	0,70

### Seven - MIS



NP	Titanium	IND3MM4RNP/TiA	IND3MM4HNP/TiA	TPDH16L71	---	SBIND3NP/PK	---	DAS_E_0019
ST	Titanium	IND3ZIMR35/TiA	IND3ZIMH35/TiA	TPDH17L71	TZIML76	SBIND3NP/PK	RZIM35	DAS_E_0040
WP	Titanium	IND3ZIMR45/TiA	IND3ZIMH45/TiA	TPDH17L71	TZIML76	SBIND3RP/PK	RZIM45	DAS_E_0041



### M4 - MIS



NP	Titanium	IND3MM4RNP/TiA	IND3MM4HNP/TiA	TPDH16L71	---	SBIND3NP/PK	---	DAS_E_0019
ST	Titanium	IND3ZIMR35/TiA	IND3ZIMH35/TiA	TPDH17L71	TZIML76	SBIND3NP/PK	RZIM35	DAS_E_0040
WP	Titanium	IND3ZIMR45/TiA	IND3ZIMH45/TiA	TPDH17L71	TZIML76	SBIND3RP/PK	RZIM45	DAS_E_0041



### C1 - MIS



NP	Titanium	IND3MC1RNP/TiA	IND3MC1HNP/TiA	TPDH16L71	---	SBIND3NP/PK	---	DAS_E_0016
RP	Titanium	IND3MC1RRP/TiA	IND3MC1HRP/TiA	TPDH17L73	---	SBIND3RP/PK	---	DAS_E_0017
WP	Titanium	IND3MC1RRP/TiA	IND3MC1HRP/TiA	TPDH17L73	---	SBIND3RP/PK	---	DAS_E_0017



### V3 - MIS



ST	Titanium	IND3MC1RRP/TiA	IND3MC1HRP/TiA	TPDH17L73	---	SBIND3RP/PK	---	DAS_E_0017
----	----------	----------------	----------------	-----------	-----	-------------	-----	------------



### Multi-Unit - MIS



GENERAL	Titanium	IND3MMU/TiA	--	TPDH16	---	SBIND3MURP/PK	---	DAS_E_0020
---------	----------	-------------	----	--------	-----	---------------	-----	------------



## Compatible with - MOZO-GRAU

### MG Osseous - MOZO-GRAU



Platform	Material	Non-Engaging	Engaging	Dynamic screw	Straight screw	Scanbody	Analog	Library code
NP	Titanium	IND3UCS33/TiA	IND3UCH33/TiA	TPDH2L65	T3I2L70	SBIND3NP/PK	RUC33	DAS_E_0003
RP	Titanium	IND3UCS41/TiA	IND3UCH41/TiA	TPDH2L6	TBRA2L70	SBIND3RP/PK	RUC41	DAS_E_0024



	Hex.	h.
NP	2,55	0,70
RP	2,70	0,70

### MG Inhex - MOZO-GRAU



RP	Titanium	IND3ASTRRP/TiA	IND3ASTHRP/TiA	TPDH16L76	TAST16L82	SBIND3RP/PK	RASTRP	DAS_E_0004
WP	Titanium	IND3ASTRWP/TiA	IND3ASTHWP/TiA	TPDH2L90	TAST2L103	SBIND3RP/PK	RASTWP	DAS_E_0005



## Compatible with - MPI

### External Connection EH - MPI



Platform	Material	Non-Engaging	Engaging	Dynamic screw	Straight screw	Scanbody	Analog	Library code
RP	Titanium	IND3UCS41/TiA	IND3UCH41/TiA	TPDH2L6	TBRA2L70	SBIND3RP/PK	RUC41	DAS_E_0024



	Hex.	h.
RP	2,70	0,70

### Internal Connection CM - MPI



RP	Titanium	IND3ASTRRP/TiA	IND3ASTHRP/TiA	TPDH16L76	TAST16L82	SBIND3RP/PK	RASTRP	DAS_E_0004
WP	Titanium	IND3ASTRWP/TiA	IND3ASTHWP/TiA	TPDH2L90	TAST2L103	SBIND3RP/PK	RASTWP	DAS_E_0005



## Compatible with - NEOBIOTECH

### EB External System - NEOBIOTECH



Platform	Material	Non-Engaging	Engaging	Dynamic screw	Straight screw	Scanbody	Analog	Library code
NP	Titanium	IND3UCS35/TiA	IND3UCH35/TiA	TPDH16L6	TBRA16L70	SBIND3NP/PK	RUC35	DAS_E_0023



	Hex.	h.
RP	2,40	0,70

## Compatible with - NEODENT

### Cono Morse Mini Pilar - NEODENT



Platform	Material	Non-Engaging	Engaging	Dynamic screw	Straight screw	Scanbody	Analog	Library code
NP	Titanium	IND3CO41/TiA	---	TPDH14L39	TMU14L35	SBIND3MURP/PK	RMU48	DAS_E_0025



### Smart HE - NEODENT



Platform	Material	Non-Engaging	Engaging	Dynamic screw	Straight screw	Scanbody	Analog	Library code
RP Ø 4,1	Titanium	IND3UCS41/TiA	IND3UCH41/TiA	TPDH2L70	TBRA2L70	SBIND3RP/PK	---*	DAS_E_0024



	Hex.	h.
RP	2,70	0,70

\*Use TPDH2L6 screw for original analog

## Compatible with - NOBEL BIOCARE

### Branemark - NOBEL BIOCARE



Platform	Material	Non-Engaging	Engaging	Dynamic screw	Straight screw	Scanbody	Analog	Library code
NP	Titanium	IND3UCS35/TiA	IND3UCH35/TiA	TPDH16L6	TBRA16L70	SBIND3NP/PK	RUC35	DAS_E_0023
RP	Titanium	IND3UCS41/TiA	IND3UCH41/TiA	TPDH2L6	TBRA2L70	SBIND3RP/PK	RUC41	DAS_E_0024



	Hex.	h.
NP	2,40	0,70
RP	2,70	0,70

## Compatible with - NOBEL BIOCARE

### Multi-Unit - NOBEL BIOCARE



Platform	Material	Non-Engaging	Engaging	Dynamic screw	Straight screw	Scanbody	Analog	Library code
RP	Titanium	IND3CO41/TiA	---	TPDH14L39	TMU14L35	SBIND3MURP/PK	RMU48	DAS_E_0025



### Replace - NOBEL BIOCARE



NP	Titanium	IND3RPLR35/TiA	IND3RPLT35/TiA	TPDH18L75	TRPL18L83	SBIND3NP/PK	RRPL35	DAS_E_0026
RP	Titanium	IND3RPLR43/TiA	IND3RPLT43/TiA	TPDH2L90	TRPL2L100	SBIND3RP/PK	RRPL43	DAS_E_0027
WP	Titanium	IND3RPLR50/TiA	IND3RPLT50/TiA	TPDH2L90	TRPL2L100	SBIND3RP/PK	RRPL50	DAS_E_0028



### Active - NOBEL BIOCARE



NP	Titanium	IND3ACTRNP/TiA	IND3ACTHNP/TiA	TPDH16L73	TACT16L73	SBIND3NP/PK	RACTNP	DAS_E_0021
RP	Titanium	IND3ACTRRP/TiA	IND3ACTHRP/TiA	TPDH2L75	TACT2L73	SBIND3RP/PK	RACTRP	DAS_E_0022



## Compatible with - OSSEOLIFE

### OEX - OSSEOLIFE



Platform	Material	Non-Engaging	Engaging	Dynamic screw	Straight screw	Scanbody	Analog	Library code
RP	Titanium	IND3UCS41/TiA	IND3UCH41/TiA	TPDH2L6	TBRA2L70	SBIND3RP/PK	RUC41	DAS_E_0024



	Hex.	h.
RP	2,70	0,70

## Compatible with - OSSTEM IMPLANT

### TS - OSSTEM IMPLANT



Platform	Material	Non-Engaging	Engaging	Dynamic screw	Straight screw	Scanbody	Analog	Library code
MINI*	Titanium	IND3OTSARNP/TiA	IND3OTSHNP/TiA	TPDH16L94	TCAM16L105	SBIND3NP/PK	---	DAS_E_0029
RP	Titanium	IND3OTSRRP/TiA	IND3OTSHRP/TiA	TPDH2L79	---	SBIND3RP/PK	---	DAS_E_0030

\*Maximum angulation 20°



### US - OSSTEM IMPLANT



Platform	Material	Non-Engaging	Engaging	Dynamic screw	Straight screw	Scanbody	Analog	Library code
MINI Ø 3,5	Titanium	IND3UCS35/TiA	IND3UCH35/TiA	TPDH16L6	TBRA16L70	SBIND3NP/PK	RUC35	DAS_E_0023
RP Ø 4,1	Titanium	IND3UCS41/TiA	IND3UCH41/TiA	TPDH2L6	TBRA2L70	SBIND3RP/PK	RUC41	DAS_E_0024



	Hex.	h.
NP	2,40	0,70
RP	2,70	0,70

## Compatible with - OSTEOPLUS

### She - OSTEOPLUS



Platform	Material	Non-Engaging	Engaging	Dynamic screw	Straight screw	Scanbody	Analog	Library code
NP	Titanium	IND3UCS35BT/TiA	IND3UCH35BT/TiA	TPDH2L65	---	SBIND3NP/PK	RUC35BT	DAS_E_0009
RP	Titanium	IND3UCS41/TiA	IND3UCH41/TiA	TPDH2L65	TBRA2L70	SBIND3RP/PK	RUC41	DAS_E_0024



	Hex.	h.
NP	2,50	1,10
RP	2,70	0,70

### Shi - OSTEOPLUS



Platform	Material	Non-Engaging	Engaging	Dynamic screw	Straight screw	Scanbody	Analog	Library code
Ø 3,5	Titanium	IND3ZIMR35/TiA	IND3ZIMH35/TiA	TPDH17L71	TZIML76	SBIND3NP/PK	RZIM35	DAS_E_0040



## Compatible with - PHIBO

### TSH/BTN Serie 3 - PHIBO



Platform	Material	Non-Engaging	Engaging	Dynamic screw	Straight screw	Scanbody	Analog	Library code
RP	Titanium	IND3UCS41/TiA	IND3UCH41/TiA	TPDH2L6	T3I2L70	SBIND3RP/PK	RUC41	DAS_E_0024



	Hex.	h.
RP	2,70	0,70

### TSH/BTN Serie 4 - PHIBO



Platform	Material	Non-Engaging	Engaging	Dynamic screw	Straight screw	Scanbody	Analog	Library code
RP	Titanium	IND3UCS41/TiA	IND3UCH41/TiA	TPDH2L6	T3I2L70	SBIND3RP/PK	RUC41	DAS_E_0024



	Hex.	h.
RP	2,70	0,70

## Compatible with - PROCLINIC

### External Connection - PROCLINIC



Platform	Material	Non-Engaging	Engaging	Dynamic screw	Straight screw	Scanbody	Analog	Library code
RP	Titanium	IND3UCS41/TiA	IND3UCH41/TiA	TPDH2L6	TBRA2L70	SBIND3RP/PK	RUC41	DAS_E_0024



	Hex.	h.
RP	2,70	0,70

### Internal Hexagon - PROCLINIC



Platform	Material	Non-Engaging	Engaging	Dynamic screw	Straight screw	Scanbody	Analog	Library code
NP	Titanium	IND3ZIMR35/TiA	IND3ZIMH35/TiA	TPDH17L71	TZIML76	SBIND3NP/PK	RZIM35	DAS_E_0040
RP	Titanium	IND3ZIMR45/TiA	IND3ZIMH45/TiA	TPDH17L71	TZIML76	SBIND3RP/PK	RZIM45	DAS_E_0041



## Compatible with - PROCLINIC

### Internal Octagon - PROCLINIC



Platform	Material	Non-Engaging	Engaging	Dynamic screw	Straight screw	Scanbody	Analog	Library code
RP	Titanium	IND3OCR48/TiA	IND3OCO48/TiA	TPDH2L67	TSTR2L67	SBIND3OCR/PK	ROC48	DAS_E_0037



## Compatible with - RADHEX

### PHE - RADHEX



Platform	Material	Non-Engaging	Engaging	Dynamic screw	Straight screw	Scanbody	Analog	Library code
NP	Titanium	IND3UCS35/TiA	IND3UCH35/TiA	TPDH16L76	TBRA16L70	SBIND3NP/PK	---	DAS_E_0023
RP	Titanium	IND3UCS41/TiA	IND3UCH41/TiA	TPDH2L65	TBRA2L70	SBIND3RP/PK	RUC41	DAS_E_0024



	Hex.	h.
RP	2,70	0,70

### PHI - RADHEX



Platform	Material	Non-Engaging	Engaging	Dynamic screw	Straight screw	Scanbody	Analog	Library code
NP	Titanium	IND3ZIMR35/TiA	IND3ZIMH35/TiA	TPDH18L75	---	SBIND3NP/PK	---	DAS_E_0040
RP	Titanium	IND3ZIMR45/TiA	IND3ZIMH45/TiA	TPDH17L71	TZIML76	SBIND3RP/PK	RZIM45	DAS_E_0041



## Compatible with - SGS

### P1 - SGS



Platform	Material	Non-Engaging	Engaging	Dynamic screw	Straight screw	Scanbody	Analog	Library code
Ø3,2	Titanium	IND3ZIMR35/TiA	IND3ZIMH35/TiA	TPDH17L71	TZIML76	SBIND3NP/PK	RZIM35	DAS_E_0040
Ø3,75	Titanium	IND3ZIMR35/TiA	IND3ZIMH35/TiA	TPDH17L71	TZIML76	SBIND3NP/PK	RZIM35	DAS_E_0040
Ø4,2	Titanium	IND3ZIMR35/TiA	IND3ZIMH35/TiA	TPDH17L71	TZIML76	SBIND3NP/PK	RZIM35	DAS_E_0040
Ø5	Titanium	IND3ZIMR35/TiA	IND3ZIMH35/TiA	TPDH17L71	TZIML76	SBIND3NP/PK	RZIM35	DAS_E_0040
Ø6	Titanium	IND3ZIMR35/TiA	IND3ZIMH35/TiA	TPDH17L71	TZIML76	SBIND3NP/PK	RZIM35	DAS_E_0040



## Compatible with - SGS

### P7 - SGS



Platform	Material	Non-Engaging	Engaging	Dynamic screw	Straight screw	Scanbody	Analog	Library code
Ø 3,2	Titanium	IND3ZIMR35/TiA	IND3ZIMH35/TiA	TPDH17L71	TZIML76	SBIND3NP/PK	RZIM35	DAS_E_0040
Ø 3,75	Titanium	IND3ZIMR35/TiA	IND3ZIMH35/TiA	TPDH17L71	TZIML76	SBIND3NP/PK	RZIM35	DAS_E_0040
Ø 4,2	Titanium	IND3ZIMR35/TiA	IND3ZIMH35/TiA	TPDH17L71	TZIML76	SBIND3NP/PK	RZIM35	DAS_E_0040
Ø 5	Titanium	IND3ZIMR35/TiA	IND3ZIMH35/TiA	TPDH17L71	TZIML76	SBIND3NP/PK	RZIM35	DAS_E_0040
Ø 6	Titanium	IND3ZIMR35/TiA	IND3ZIMH35/TiA	TPDH17L71	TZIML76	SBIND3NP/PK	RZIM35	DAS_E_0040



## Compatible with - SIGNO VINCES

### Compact 4,5 - SIGNO VINCES



Platform	Material	Non-Engaging	Engaging	Dynamic screw	Straight screw	Scanbody	Analog	Library code
CM Ø 3,8	Titanium	IND3ASTRWP/TiA	IND3ASTHWP/TiA	TPDH2L90	TAST2L103	SBIND3RP/PK	RASTWP	DAS_E_0005

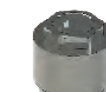


### Duo - SIGNO VINCES



RP	Titanium	IND3UCS41/TiA	IND3UCH41/TiA	TPDH2L74	TBRA2L70	SBIND3RP/PK	---*	DAS_E_0024
----	----------	---------------	---------------	----------	----------	-------------	------	------------

\*Use TPDH2L6 screw for original analog



	Hex.	h.
RP	2,70	0,70

### Duocon 3,8 - SIGNO VINCES



CM Ø 3,8	Titanium	IND3ASTRWP/TiA	IND3ASTHWP/TiA	TPDH2L90	TAST2L103	SBIND3RP/PK	RASTWP	DAS_E_0005
-------------	----------	----------------	----------------	----------	-----------	-------------	--------	------------



## Compatible with - SIGNO VINCES

### Inttegra - SIGNO VINCES



Platform	Material	Non-Engaging	Engaging	Dynamic screw	Straight screw	Scanbody	Analog	Library code
RP	Titanium	IND3UCS41/TiA	IND3UCH41/TiA	TPDH2L70	TBRA2L70	SBIND3RP/PK	---	DAS_E_0024

\*Use TPDH2L6 screw for original analog



	Hex.	h.
RP	2,70	0,70

## Compatible with - STRAUMANN

### Internal Octagon - STRAUMANN



Platform	Material	Non-Engaging	Engaging	Dynamic screw	Straight screw	Scanbody	Analog	Library code
RP Ø4,8	Titanium	IND3OCR48/TiA	IND3OCO48/TiA	TPDH2L67	TSTR2L67	SBIND3OCR/PK	ROC48	DAS_E_0037



### Bone Level - STRAUMANN

(1)Gingival height 1mm  
(2)Gingival height 2mm



NC-Ø3,3 (1)	Titanium	IND3BONRNP/TiA	IND3BONHNP/TiA	TPDH16L78	TBON16L79	SBIND3NP/PK	RBONNP	DAS_E_0033
RC-Ø4,1 (1)	Titanium	IND3BONRRP/TiA	IND3BONHRP/TiA	TPDH16L78	TBON16L79	SBIND3RP/PK	RBONRP	DAS_E_0035
RC-Ø4,8 (1)	Titanium	IND3BONRRP/TiA	IND3BONHRP/TiA	TPDH16L78	TBON16L79	SBIND3RP/PK	RBONRP	DAS_E_0035
NC-Ø3,3 (2)	Titanium	IND3BONRNP2/TiA	IND3BONHNP2/TiA	TPDH16L78	TBON16L79	SBIND3NP/PK	RBONNP	DAS_E_0034
RC-Ø4,1 (2)	Titanium	IND3BONRRP2/TiA	IND3BONHRP2/TiA	TPDH16L78	TBON16L79	SBIND3RP/PK	RBONRP	DAS_E_0036
RC-Ø4,8 (2)	Titanium	IND3BONRRP2/TiA	IND3BONHRP2/TiA	TPDH16L78	TBON16L79	SBIND3RP/PK	RBONRP	DAS_E_0036



## Compatible with - SYBRON IMPLANTS SOLUTIONS

### Endopore (Innova) - SYBRON IMPLANTS SOLUTIONS



Platform	Material	Non-Engaging	Engaging	Dynamic screw	Straight screw	Scanbody	Analog	Library code
RP	Titanium	IND3UCS41/TiA	IND3UCH41/TiA	TPDH2L6	TBRA2L70	SBIND3RP/PK	RUC41	DAS_E_0024



	Hex.	h.
RP	2,70	0,70

## Compatible with - TITANIUM-FIX

### b-fix - TITANIUM-FIX



Platform	Material	Non-Engaging	Engaging	Dynamic screw	Straight screw	Scanbody	Analog	Library code
NP	Titanium	IND3ASTRRP/TiA	IND3ASTHRP/TiA	TPDH16L76	TAST16L82	SBIND3RP/PK	RASTRP	DAS_E_0004
WP	Titanium	IND3ASTRWP/TiA	IND3ASTHWP/TiA	TPDH2L90	TAST2L103	SBIND3RP/PK	RASTWP	DAS_E_0005



## Compatible with - TRI DENTAL IMPLANTS

### Tri-Vent - TRI DENTAL IMPLANTS



Platform	Material	Non-Engaging	Engaging	Dynamic screw	Straight screw	Scanbody	Analog	Library code
Ø 3,75	Titanium	IND3ZIMR35/TiA	IND3ZIOHNP/TiA	TPDH17L71	TZIML76	SBIND3NP/PK	RZIM35	DAS_E_0042
Ø 4,1	Titanium	IND3ZIMR35/TiA	IND3ZIOHNP/TiA	TPDH17L71	TZIML76	SBIND3NP/PK	RZIM35	DAS_E_0042
Ø 4,7	Titanium	IND3ZIMR35/TiA	IND3ZIOHNP/TiA	TPDH17L71	TZIML76	SBIND3NP/PK	RZIM35	DAS_E_0042



## Compatible with - TRINON

### Q2 - TRINON



Platform	Material	Non-Engaging	Engaging	Dynamic screw	Straight screw	Scanbody	Analog	Library code
RP	Titanium	IND3UCS41/TiA	IND3UCH41/TiA	TPDH2L6	TBRA2L70	SBIND3RP/PK	RUC41	DAS_E_0024



	Hex.	h.
RP	2,70	0,70

### QK - TRINON



RP	Titanium	IND3OCR48/TiA	IND3OCO48/TiA	TPDH2L67	TSTR2L67	SBIND3OCR/PK	ROC48	DAS_E_0037
----	----------	---------------	---------------	----------	----------	--------------	-------	------------



## Compatible with - XIVE

### Internal - XIVE



Platform	Material	Non-Engaging	Engaging	Dynamic screw	Straight screw	Scanbody	Analog	Library code
Ø 3,4	Titanium	IND3XIVR34/TiA	IND3XIVH34/TiA	TPDH16L81	---	SBIND3NP/PK	---	DAS_E_0038
Ø 3,8	Titanium	IND3XIVR38/TiA	IND3XIVH38/TiA	TPDH16L81	---	SBIND3RP/PK	---	DAS_E_0039



## Compatible with - ZIMMER

### Screw-Vent - ZIMMER



Platform	Material	Non-Engaging	Engaging	Dynamic screw	Straight screw	Scanbody	Analog	Library code
Ø 3,5	Titanium	IND3ZIMR35/TiA	IND3ZIMH35/TiA	TPDH17L71	TZIML76	SBIND3NP/PK	RZIM35	DAS_E_0040
	Friction-Fit	IND3ZIMR35/TiA	IND3ZIOHNP/TiA	TPDH17L71	TZIML76	SBIND3NP/PK	RZIM35	DAS_E_0042
Ø 4,5	Titanium	IND3ZIMR45/TiA	IND3ZIMH45/TiA	TPDH17L71	TZIML76	SBIND3RP/PK	RZIM45	DAS_E_0041
	Friction-Fit	IND3ZIMR45/TiA	IND3ZIOHRP/TiA	TPDH17L71	TZIML76	SBIND3RP/PK	RZIM45	DAS_E_0043



### Swiss-Plus - ZIMMER



Ø 4,8	Titanium	IND3OCR48/TiA	IND3OCO48/TiA	TPDH2L67	TSTR2L67	SBIND3OCR/PK	ROC48	DAS_E_0037
-------	----------	---------------	---------------	----------	----------	--------------	-------	------------



## SCANBODY



SBIND3MURP/PK  
Compatible Nobel Biocare  
Multi-unit Regular



SBIND3NP/PK  
All narrow compatibilities



SBIND3RP/PK  
Rest of regular/wide  
compatibilities



SBIND3OCR/PK  
Compatible with Straumann  
Internal Regular Octagon



## DYNAMIC SCREWDRIVER

Screwdriver with hexalobular head, exclusively to the 3.0 Dynamic Abutment® system; lengths: 18, 24, 32mm. Our screwdriver has a contra-angle connection to make it easier to use with a dynamometer or manual ratchet, with the corresponding adaptors or handles.



HEXALOBULAR 1.70 mm  
DSPDCLH-18: PD 18mm



HEXALOBULAR 1.70 mm  
DSPDCLH-24: PD 24mm



HEXALOBULAR 1.70 mm  
DSPDCLH-32: PD 32mm

## STRAIGHT SCREWS

They cover all the thread metrics available on the market. We have several lengths for each metric to make the adaptation to the milled structures easier. Made of grade 5 Titanium.



## SCREWDRIVERS FOR STRAIGHT SCREWS



CLDES 1.20  
Hex 1.20mm



CLDES 1.30  
Squa. 1.30mm



CLDES 1.25  
Hex 1.25mm



CLDES 1.27  
Hex. 1.27mm



CLDESMNUG  
Unigrip

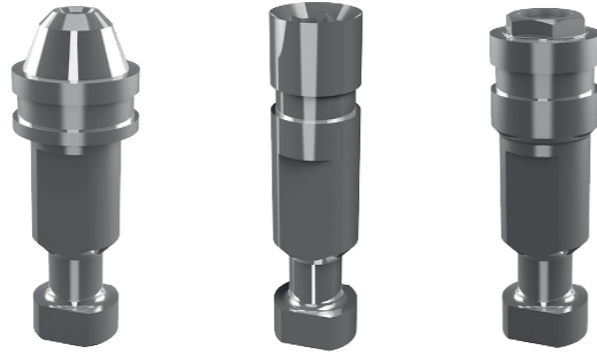


DESLCTORX  
25mm



## ANALOGS

Stainless steel implant analog. It reproduces the implant connection



## COMPLEMENTS



### Manual handle

Made of stainless steel. They are used to connect screwdriver bits with the contra-angle connection

### Large manual handle for laboratory

Ref. MNLB  
Ideal to manipulate models in the laboratory. Length 55.65mm.



### Manual handle for clinic

Ref. MNCL80  
Clinic handle: used to position the prosthesis in the mouth prior to torque control in the clinic. Length: 15.65mm.



### Universal manual torque wrench prosthetic

Ref. CCUNI

Torque wrench. 4mm square connection. Torque 10-35N.c

### Manual torque wrench adapter prosthetic

Piece to connect the screwdriver with contra-angle connection to the torque wrench.



Universal Manual torque wrench adapter

Ref. MNADPCA  
4mm Square connection



Straumann Manual torque wrench adapter

Ref. SPACC-STR  
Straumann connection

All commercial trademarks mentioned herein are fully registered by their respective companies, and the images that appear are just to provide an orientation. Talladium reserves the right to modify this document without previous notice. Talladium is not responsible for the inadequate execution of these products if the warning indications corresponding to every reference are not contemplated. The information included in this catalogue is exclusively addressed to professionals in dental sector.

Visit our Online Store to find all our products and compatibilities :

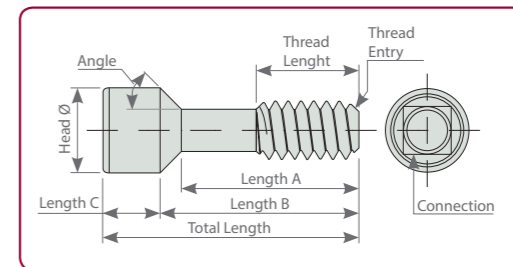
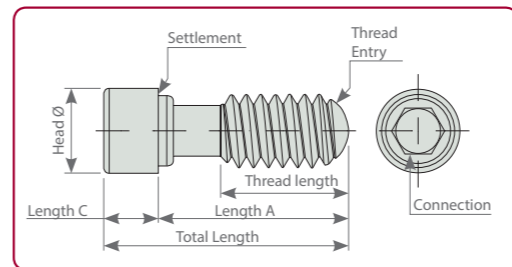
[www.dynamicabutmentstore.com](http://www.dynamicabutmentstore.com)

# DYNAMIC SCREWS



REFERENCE	METRIC	TORQUE	TOTAL LENGTH	THREAD LENGTH	HEAD DIAMETER	A LENGTH	B LENGTH	C LENGTH	SETTLEMENT	ANGLE	THREAD ENTRY	CONNECTION
TPDH14L39	1,4	15 N-cm	3,90	1,80	2,40	2,10	-	1,80	straight	-	45° Chamfer	Hexalobular 1,70
TPDH14	1,4	15 N-cm	4	1,85	-	2	2,78	1,22	conical	30°	45° Chamfer	
TPDHST	1,4	15 N-cm	4,5	2,3	2,30	2,5	3,28	1,22	conical	30°	45° Chamfer	
TPDH14L52	1,4	15 N-cm	5,20	2,90	2,30	3,40	-	1,80	straight	-	45° Chamfer	
TPDH14L67	1,4	15 N-cm	6,70	2,31	2,30	5,00	5,45	1,25	conical	45°	45° Chamfer	
TPDH14L74	1,4	15 N-cm	7,40	3,55	2,30	5,00	5,99	1,41	conical	25°	45° Chamfer	
TPDH16	1,6	20 N-cm	4,4	2,5	2,30	2,9	-	1,5	straight	-	Semi-sphere	
TPDH16L6	1,6	20 N-cm	5,9	3	2,30	4,4	-	1,5	straight	-	Semi-sphere	
TPDH16L71	1,6	20 N-cm	7,10	2,80	2,30	5,20	5,53	1,57	conical	60°	45° Chamfer	
TPDH16L72	1,6	20 N-cm	7,2	3,5	2,30	5,2	5,85	1,35	conical	30°	45° Chamfer	
TPDH16L73	1,6	20 N-cm	7,3	2,2	2,30	4,87	5,56	1,74	conical	35°	45° Chamfer	
TPDH16L76	1,6	20 N-cm	7,6	3,6	2,30	6,1	-	1,5	straight	-	Semi-sphere	
TPDH16L78	1,6	20 N-cm	7,8	2	2,30	5,36	7,03	0,81	conical	15°	45° Chamfer	
TPDH16L81	1,6	20 N-cm	8,10	3,00	2,30	6,35	6,72	1,38	conical	45°	45° Chamfer	
TPDH16L84	1,6	20 N-cm	8,4	3,5	2,30	6,8	-	1,6	straight	-	Semi-sphere	
TPDH16L94	1,6	20 N-cm	9,40	2,90	2,30	7,65	8,00	1,40	conical	45°	45° Chamfer	
TPDH17L71	N1-72	25 N-cm	7,1	2,6	2,30	5,56	5,65	1,45	conical	70°	45° Chamfer	
TPDH17L73	N1-72	25 N-cm	7,30	2,50	2,30	5,50	5,77	1,53	conical	60	45° Chamfer	
TPDH18	1,8	25 N-cm	4,4	2,75	2,30	3	-	1,4	straight	-	Semi-sphere	
TPDH18L45	1,8	25 N-cm	4,50	2,30	2,30	2,81	2,90	1,60	conical	70°	45° Chamfer	
TPDH18L48	1,8	25 N-cm	4,8	2,8	2,30	3,22	3,65	1,15	conical	30°	Semi-sphere	
TPDH18L65	1,8	25 N-cm	6,50	2,80	2,30	5,00	-	1,50	straight	-	Semi-sphere	
TPDH18L74	1,8	25 N-cm	7,4	3,8	2,30	5,8	6,03	1,6	conical	50°	45° Chamfer	

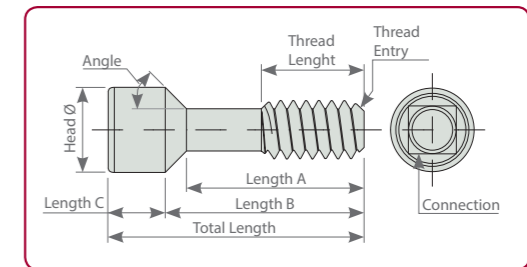
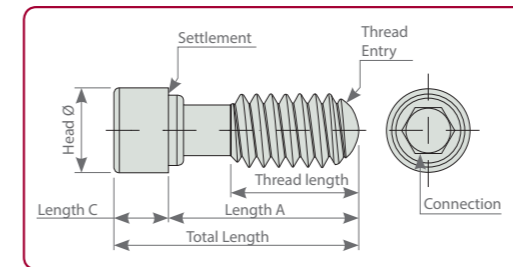
REFERENCE	METRIC	TORQUE	TOTAL LENGTH	THREAD LENGTH	HEAD DIAMETER	A LENGTH	B LENGTH	C LENGTH	SETTLEMENT	ANGLE	THREAD ENTRY	CONNECTION
TPDH18L75	1,8	25 N-cm	7,5	3,3	2,30	6,1	-	1,4	straight	-	Semi-sphere	Hexalobular 1,70
TPDH18L80	1,8	25 N-cm	8,00	4,00	2,30	6,50	-	1,50	straight	-	45° Chamfer	
TPDH2	2	25 N-cm	4,7	3	2,30	3,3	-	1,4	straight	-	Semi-sphere	
TPDH2L5	2	25 N-cm	5	2,8	2,30	3,39	3,6	1,4	conical	30°	Semi-sphere	
TPDH2L51	2	25 N-cm	5,1	3,1	2,30	3,6	-	1,5	straight	-	Semi-sphere	
TPDH2L6	2	25 N-cm	6	2,7	2,30	4,5	-	1,5	straight	-	Semi-sphere	
TPDH2L65	2	25 N-cm	6,5	2,7	2,30	5	-	1,5	straight	-	45° Chamfer	
TPDH2L67	2,0	25 N-cm	6,70	2,30	2,58	3,65	5,68	1,02	conical	15°	45° Chamfer	
TPDH2L70	2,0	25 N-cm	7,00	3,00	2,30	5,60	-	1,40	straight	-	Semi-sphere	
TPDH2L74	2	25 N-cm	7,4	3,3	2,30	6	-	1,4	straight	-	Semi-sphere	
TPDH2L75	2	25 N-cm	7,5	2,75	2,30	5,93	6,18	1,32	conical	35°	45° Chamfer	
TPDH2L79	2,0	25 N-cm	7,90	3,30	2,30	6,33	6,50	1,40	conical	45°	45° Chamfer	
TPDH2L82	2	25 N-cm	8,2	4,7	2,4	6,7	-	1,5	straight	-	Semi-sphere	
TPDH2L90	2,0	25 N-cm	9,00	4,00	2,30	7,50	-	1,50	straight	-	Semi-sphere	
TPDH25	2,5	25 N-cm	5,4	3,8	2,85	4,1	-	1,3	straight	-	Semi-sphere	
TPDH25L67	2,5	25 N-cm	6,7	4,6	2,85	5,1	-	1,6	straight	-	Semi-sphere	



# STRAIGHT SCREWS

	REFERENCE	METRIC	TORQUE	TOTAL LENGTH	THREAD LENGTH	HEAD DIAMETER	A LENGTH	B LENGTH	C LENGTH	SETTLEMENT	ANGLE	THREAD ENTRY	CONNECTION
	TMU14L35	1,4	15 N-cm	3,5	1,8	2,1	-	1,4	2	straight	-	Chafán 45°	Unigrip
	TST	1,4	15 N-cm	3,9	1,91	2,1	-	1,8	2,4	straight	-	45° Chamfer	Hex. 1,20
	TCO	1,4	15 N-cm	4	2	2,2	-	1,8	2,3	straight	-	45° Chamfer	Hex. 1,20
	TUC16	1,6	20 N-cm	7	2,79	4,86	5,44	1,56	2,3	conical	45°	45° Chamfer	Squa. 1,30
	TBRA16L70	1,6	20 N-cm	7	2,7	5,15	-	1,8	2,3	straight	-	45° Chamfer	Unigrip
	TACT16L73	1,6	20 N-cm	7,3	2,7	5,15	5,9	1,4	2,2	conical	35°	45° Chamfer	Unigrip
	TEV16L75	1,6	20 N-cm	7,5	7,5	5,33	5,85	1,65	2,15	conical	30°	45° Chamfer	Hex. 1,27
	TBON16L79	1,6	20 N-cm	7,9	2	5,72	6,9	2,18	2,18	conical	15°	45° Chamfer	Torx T6
	TAST16L82	1,6	20 N-cm	8,2	3,03	6,25	-	2	2,33	straight	-	45° Chamfer	Hex. 1,27
	T3I16L84	1,6	20 N-cm	8,4	2,5	6,6	-	1,8	2	straight	-	45° Chamfer	Hex. 1,20
	T3I	1,6	20 N-cm	9,3	3,3	7,3	-	2	2,3	straight	-	Semi-sphere	Squa. 1,30
	TCAM16L105	1,6	20 N-cm	10,5	2,9	8,15	8,4	2,1	2,1	conical	45°	45° Chamfer	Hex. 1,27
	TZIML76	N1-72	25 N-cm	7,6	2,8	5,6	5,76	1,84	2,3	conical	70°	45° Chamfer	Hex. 1,25
	TZIM	N1-72	25 N-cm	8,17	3	5,31	5,87	2,3	2,4	conical	45°	45° Chamfer	Squa. 1,30
	TEV18L45	1,8	25 N-cm	4,5	2,3	2,8	2,9	1,6	2,35	conical	70°	45° Chamfer	Hex. 1,27
	TKL	1,8	25 N-cm	6	3,18	3,5	3,85	2,15	2,4	conical	45°	45° Chamfer	Hex. 1,50
	TBTI18L68	1,8	25 N-cm	6,8	3,3	5,2	-	1,6	2,3	straight	-	45° Chamfer	Hex. 1,20
	TBTI	1,8	25 N-cm	7	3,2	5,2	-	1,8	2,5	straight	-	45° Chamfer	Squa. 1,30
	TECKALL125	1,8	25 N-cm	7,2	4,47	2,3	6,2	1	2,4	conical	30°	45° Chamfer	Hex. 1,25
	TEV18L76	1,8	25 N-cm	7,6	3,8	5,8	6,05	1,55	2,35	conical	50°	45° Chamfer	Hex. 1,27
	TRPL18L83	1,8	25 N-cm	8,3	2,5	6,5	-	1,8	2,45	straight	45°	45° Chamfer	Unigrip
	TECKDU 125	1,8	25 N-cm	9,8	5,094	8,3	8,8	1	2,4	conical	30°	45° Chamfer	Hex. 1,25

	REFERENCE	METRIC	TORQUE	TOTAL LENGTH	THREAD LENGTH	HEAD DIAMETER	A LENGTH	B LENGTH	C LENGTH	SETTLEMENT	ANGLE	THREAD ENTRY	CONNECTION
	TRPL35	1,8	25 N-cm	10,2	3,15	8,4	-	1,8	2,45	straight	-	45° Chamfer	Squa.1,30
	TBTI2L47	2	30 N-cm	4,7	2,7	3,33	-	1,37	2,35	straight	-	45° Chamfer	Hex. 1,20
	TSYN48	2	30 N-cm	5	3,06	3,26	3,5	1,5	2,49	conical	45°	45° Chamfer	Squa. 1,30
	TSTR2L67	2	30 N-cm	6,7	2,25	3,59	5,7	1	2,58	conical	15°	45° Chamfer	Torx T6
	T3I2L70	2	30 N-cm	7	3,25	5	-	2	2,4	straight	-	45° Chamfer	Hex. 1,20
	TBRA2L70	2	30 N-cm	7	3,25	5	-	2	2,4	straight	-	45° Chamfer	Unigrip
	TACT2L73	2	30 N-cm	7,3	3	5,8	6,2	1,1	2,5	conical	35°	45° Chamfer	Unigrip
	TDSM2L74	2	30 N-cm	7,4	3,3	6	-	1,4	2,3	straight	-	Semi-sphere	Torx T6
	TUC	2	30 N-cm	7,4	3,34	5,1	5,6	1,8	2,4	conical	45°	45° Chamfer	Hex. 1,20
	TSTR2L76	2	30 N-cm	7,6	3	6,1	6,3	1,3	2,4	conical	45°	Semi-sphere	Torx T6
	TRPL2L100	2	30 N-cm	10	3,6	8,5	-	1,5	2,45	straight	-	45° Chamfer	Unigrip
	TRPL	2	30 N-cm	10,2	3,15	8,4	-	1,8	2,45	straight	-	45° Chamfer	Squa.1,30
	TAST2L103	2	30 N-cm	10,3	3,5	8,3	-	2	2,33	straight	-	45° Chamfer	Hex. 1,27
	TUC25	2,5	30 N-cm	7,41	3,5	4,75	5,29	2,12	2,87	conical	45°	Semi-sphere	Squa.1,30



# TALLADIUM GUARANTEE

## TERMS AND CONDITIONS

These guarantee terms and conditions (“T&C”) cover the entire range of Talladium products (“Products”), manufactured by TALLADIUM ESPAÑA S.L. and distributed by Geoda Medical S.L. or official dealers. The guarantee described in these T&C is exclusively in benefit of the clinician (“Clinician”) and of the dental technician (“Technician”) and not for the benefit of third parties or institutions, including patients.

## GUARANTEE PERIOD

TALLADIUM ESPAÑA S.L. offers a lifelong guarantee for its entire range of products starting from the date of issue of the invoice.

## GUARANTEE SCOPE

Subject to the limitations and exceptions described in these T&C, TALLADIUM ESPAÑA S.L. will offer the following benefits:

**QUALITY:** If there are defects in the materials or in the manufacturing of the Product, TALLADIUM ESPAÑA S.L. will replace the Product with no additional cost.

**SAFETY:** If, having complied with all the product indications, the prosthesis should have to be made again, due to a fault in the Dynamic Abutment® or Dynamic Titanium Base® system, TALLADIUM ESPAÑA S.L. will replace the abutments and screws necessary to remake the prosthesis, as well as the costs derived from its manufacturing.

In case of having used our products and having complied with all the product indications, the implants suffer any damage, TALLADIUM ESPAÑA S.L. will pay the cost of the implants. This coverage will only be valid during the first 6 months after the collocation of the prosthesis which includes our products.

## CLAIM REQUIREMENTS AND PROCEDURE

To receive the benefits indicated in these T&C, the treating Clinician must satisfy the following requirements:

- The claim must be notified to TALLADIUM ESPAÑA S.L. within (30) days since the date the claimed defect was detected.
- This requires that the Clinician or Technician must contact the customer service department by telephone or by e-mail to make the claim.
- A claim form will be completed, which, together with a document or report which justifies the faulty Product and the faulty Product itself, will be sent by the customer to TALLADIUM ESPAÑA S.L. offices, within the previously indicated period.
- Clinicians or Technicians presenting a claim in agreement with these T&C must be up to date in any payments owing to TALLADIUM ESPAÑA S.L. or to any of its subsidiaries, at the time when the claim form is presented.
- All the use procedures of our Products must be carried out in agreement with the instructions of TALLADIUM ESPAÑA S.L. as well as in accordance with commonly accepted dentistry practices.
- The expenses derived from this procedure will be assumed by the customer. The return shipping costs will be assumed by TALLADIUM ESPAÑA S.L. in all those cases covered by these T&C.

Regardless of the guarantee rights, claims should be notified as soon as possible in order to comply with regulatory requirements.

## GENERAL LIMITATIONS OF THIS GUARANTEE

With the exception of the guarantee described in these T&C, neither TALLADIUM ESPAÑA S.L. nor its representatives, nor third parties manufacturing or distributing the Products, represent or offer a guarantee, agreement or any other express or implicit, oral or written, commitment, with respect to the Products (without limitation), including guarantees involved in the marketing, durability or suitability for individual uses or purposes.

In addition and within the maximum extent permitted by the relative law, TALLADIUM ESPAÑA S.L. rejects (on its own behalf, and on behalf of its representatives and third parties that manufacture or distribute Products) any responsibility with respect to any direct or indirect damage caused, which may result from or be a consequence of the design, composition of the dental prosthesis into which the Products are integrated.

## GUARANTEE EXCLUSIONS

TALLADIUM ESPAÑA S.L. limits this guarantee to:

- Transformed abutments that form part of the dental prosthesis. But not the screws used to anchor them.
- Problems derived from the use of laboratory screws for the definite fixation of the prosthesis. TALLADIUM ESPAÑA S.L. has clinical screws that satisfy that function.
- Clinical screws that have been in the mouth for more than 2 years, as it is understood that the patient has to have annual check-ups with the subsequent change of screws.
- The fault is due to normal wear and tear.

## AMENDMENT OR SUSPENSION OF THE GUARANTEE

TALLADIUM ESPAÑA S.L. reserves the right to amend or withdraw these T&C at any time and without prior notification. Any modification or suspension shall not affect products already placed in patients.



AV. BLONDEL, 54 3º · 25002 · LLEIDA (SPAIN)  
TEL. +34 973 289 580  
das@dynamicabutment.com  
www.dynamicabutment.com



AV. BLONDEL, 54 3º · 25002· LLEIDA (SPAIN)

TEL. +34 973 289 580

[das@dynamicabutment.com](mailto:das@dynamicabutment.com)

[www.dynamicabutment.com](http://www.dynamicabutment.com)

DYNAMIC ABUTMENT® SOLUTIONS