



BIOTECH DENTAL

W E E G O . F R



BROCHURE



BIOTECH DENTAL



BIOTECH DENTAL

BIOTECH DENTAL GROUP 2.0 DENTAL OFFICE PARTNER.

Since its creation in 1987, Biotech Dental is committed to develop a strong relationship of trust with dentists and dental technicians.

Together, we design and develop ever more tailored product lines to the challenges of the future. Our position is located at the crossroads of their expectations, innovation and technology.

Allow practitioners to offer the best products at the best prices for their patients: that is the first objective of Biotech Dental.

With more than a million dental implants sold, we have helped to improve the lives of thousands of patients worldwide through all dentists who have trusted us. With our expertise and our know-how, we have chosen to be pioneers of this development through innovative technologies.

In recent years, we have integrated new skills, invested over 10 % of our turnover in research and development to be able to develop and propose solutions on the cutting edge innovation.

Today we are a key partner for practitioners of dentistry. We offer our customers a wide range of products and services around dental care, to enable them to meet the different needs of their patients.

Innovation and Technology for practitioners to make affordable excellence to patients: this is Ethical currency of BIOTECH DENTAL.

As many products and services serving the dental office 2.0.

Philippe VERAN

CEO

از بدو تاسیس، بیوتک دنتال خود را متعهد به برقراری ارتباطی استوار و قدرتمند بر پایه اعتماد با دندانپزشکان و تکنسین ها دانسته است. ما با هم با نگاه به آینده محصولاتی به طراحی و ساخت محصولات جدید می پردازیم. جایگاه ما درست در میانه انتظارات شما و نوآوری و تکنولوژی است در طی سالهای اخیر بیوتک دنتال با استفاده از دانش و تکنولوژی جدید و اختصاص ۱۰٪ از گردش مالی خود به تحقیق و توسعه توانسته است به شریکی قوی برای دندانپزشکان و تکنسین ها تبدیل شده با تولید یک میلیون ایمپلنت با بهترین کیفیت و مناسب ترین قیمت از طریق دندانپزشکان به درمان و تغییر کیفیت زندگی بسیاری از بیماران بپردازد.

سرمایه اخلاقی ما، نوآوری و تکنولوژی برای دندانپزشکان و برترین و مقرون به صرفه برای بیماران

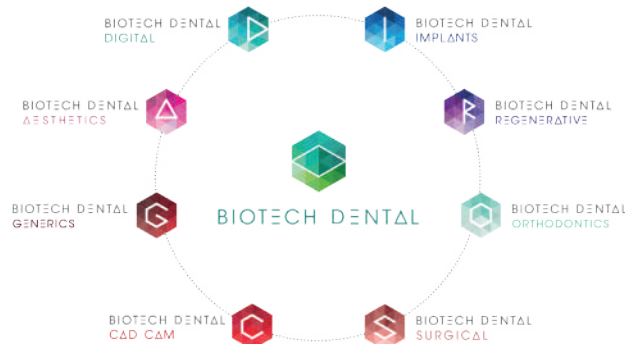




TABLE OF CONTENTS

Biotech Dental	Page 2
Table of contents	Page 3
The concept	Page 4
Quality, Manufacturing, Traceability	Page 5
Characteristics	Page 6
Implants range	Page 8
Surgical kit	Page 9
Ancillary surgical instruments	Page 10
Drills and reamers	Page 10
Gauges	Page 11
Additional kits	Page 12
Prosthetic synopsis	Page 14



THE CONCEPT

Weego.fr, Think Simple!

The **WEEGO.FR** implant was born of an innovative concept.

It was designed while keeping in mind scientific knowledge proven for 30 years in the field of implantology and manufacturing constraints, which allows a combination of high technical performance and very high quality at an attractive price.

Its goal is to facilitate access to implantology for the practitioners as well as for the patients, offering all the required elements for optimum results.

ایمپلنت weego بر سه اصل دانش روز و کیفیت بسیار بالا و هزینه تمام شده اقتصادی طراحی شده است. این فرآیند با اتکا به ۳۰ سال حضور در زمینه ایمپلنتولوژی و تولید صنعتی صورت گرفته است هدف از طراحی این محصول، استفاده از دانش روز و تسهیل دسترسی به تکنیک های ایمپلنتولوژی برای دندانپزشکان و بیماران آنها بوده است.



WEEGO.FR targets the essential:

- › Design and production based on scientific basis,
- › Ease of use,
- › Streaming range,
- › Online sale.

QUALITY, MANUFACTURING, TRACEABILITY



QUALITY

The **WEEGO.FR** implant is manufactured according to the strictest industry of normative and regulatory requirements.

تولید weego براساس سختگیرانه ترین اصول کار صنعتی و نظارتی انجام می شود.



100% FRENCH MANUFACTURE

Biotech Dental has been manufacturing its dental implants and prosthetic parts for almost 30 years. Manufacturing is done exclusively in France according to high-precision micromechanical principles.

These requirements also apply to the manufacture and is certified by the specific Label «Origine France Garantie» to highlight the French origin of our products.

ساخت این محصول از هر جهت و در تمام مراحل فقط در کشورفرانسه انجام شده و برچسب origine france garantie تاکید قانونی همین موضوع می باشد.



TRACEABILITY

The **WEEGO.FR** parts are individually verified.

Complete follow-up on the products is assured, from raw material to implantation.

The parts are individually packed and labelled in order to ensure traceability.

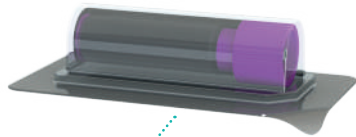
قابلیت ردگیری تمام مراحل کار از ابتدا تا انتها برای هر یک عدد از این محصول نتیجه دقت بسیار زیاد در تولید آن می باشد.



THE Weego.FR IMPLANT PACKAGING

Closed carton packaging with tamperproof labels.

Traceability labels.



Blister and seal lids guaranteeing implant sterility

بسته بندی نهایی ایمپلنت بوسیله بلیستر پلاستیکی به شکلی است که مصرف کننده می تواند از استریل بودن محصول اطمینان یابد.



Tube + lid

Titanium stop ensuring pure contact with the implant

تیوب اولیه حامل ایمپلنت و cover screw بوده و از یک استوانه تیتانیومی برای نگهداری ایمپلنت استفاده شده تا در تمام مراحل نگهداری و حمل با ماده دیگری بجز تیتانیوم تماس پیدا نکند.



AENOR Cert. 73017



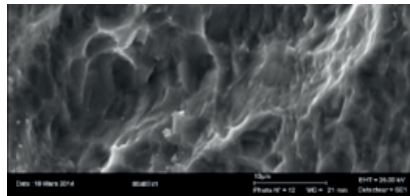


CHARACTERISTICS

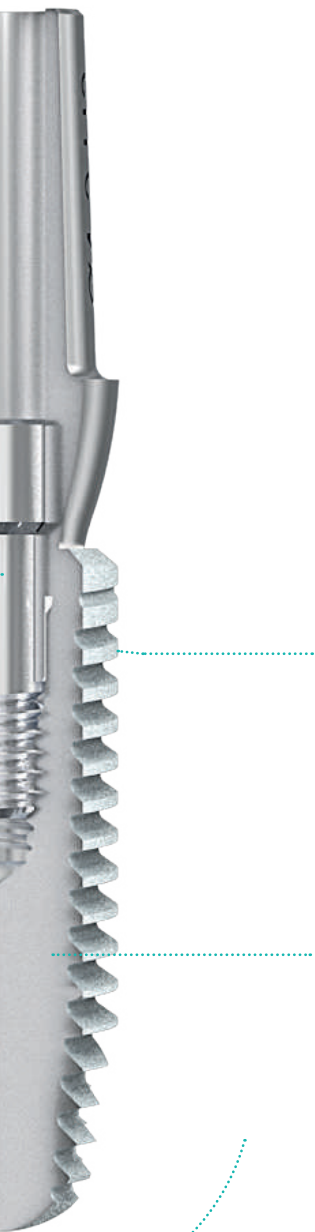
Integrated platform switching

Conical connection:
centring cone + deep hexagonal connection

Self-tapping thread



Sand-blasted and etched surface providing excellent wettability.



Cylindrical-conical implant

Titanium grade 4B implant (T60)



Nontraumatic apex

Wettability (surface energy)





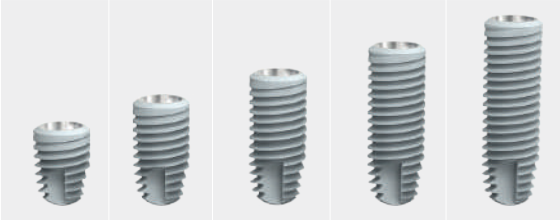
IMPLANTS RANGE

Lg. 6 mm Lg. 8 mm Lg. 10 mm Lg. 12 mm Lg. 14 mm

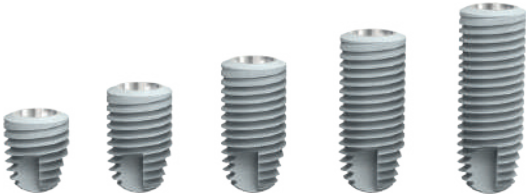
Ø 3.6 mm



Ø 4.2 mm



Ø 4.8 mm



The **WEEGO.FR** range consists of 3 diameters and 5 different lengths.

The implant diameters are differentiated by a color code.

The **WEEGO.FR** implant adapts to any clinical case. The grade 4B Titanium, provides the safety of pure Titanium with the superior mechanical resistance of Titanium alloys. Its sand blasted and acid-edged surface ensures the absence of contamination and guarantees an excellent wettability for a perfect osseointegration.

SURGICAL KIT



- › **Compact**, for minimal clutter and optimal storage,
- › **Clear thanks** to colour markings for quick instrument identification,
- › **Practical**, fast and easy to open, facilitating access to instruments,
- › **Fully dismantable** for deep cleaning,
- › **Sterilizable.**



Unique tool “two-in-one”: implant driver and screwdriver (in manual or contra-angle versions).

Drive مشترک برای قرار دادن ایمپلنت و بستن cover screw به وسیله کنتر آنگل یا دست.

Hexagonal connection

to screw the implant.

Screwdriver

to put in place the cover and healing screws.

ANCILLARY SURGICAL INSTRUMENTS

Drills and reamers

- › Complete range of drills and reamers,
- › Innovative treatment: shiny tip and matt drill body to prevent reflections from the operating light,
- › Two drills lengths to adapt to different clinical situations,
- › The drill bits have a clear and precise marking that indicates the different drilling lengths,
- › Removable drill stops can be used for a perfect and more efficient drilling depth,
- › Axial and depth gauges for each drill diameter to control and position the implant optimally.



Drills



Reamers

Gauges

- › Various gauges with clear and precise markings, which are identical to those of the drills for better readability are available:



Axial and depth gauges

- Control of the drill axis and drill depth,
 - Visualisation of the planned implant in position,
 - Estimation of the gingival height regardless of the implant diameter.



Drilling depth gauges terminal

- To view the depth of the drilling depending on the diameter of the implant.



Implant axial gauges

- For quick identification of the axis of the implant placed.

ADDITIONAL KITS

The **WEEGO.FR** range includes various kits for ease and simplicity of use:



Drill Stops

- › Specific drill stops, clippable to the drill bodies,
- › Specific kit, sterilisable.



Healing screws

- › Compatible with all prosthetic phases,
- › Range of screws adapted to emergence profiles of the abutments,
- › Slightly oversized compared to abutments to mitigate tissue retraction,
- › Laser identification marking (intended gingival diameter and height for the screw),
- › Specific kit, sterilisable,
- › Delivered per unit.





Prosthetic kit


- Ancillary tools required for the prosthetic parts are grouped together in a dedicated kit. This package also offers a torque wrench covering the range of couplings dedicated to the prosthesis (from 10 to 30 N.cm).





PROSTHETIC SYNOPSIS

The prosthetic parts are available in 2 diameters and 4 gingival heights.
The connection is common for all diameters of implants.

	Ht.1 mm	Ht. 2 mm	Ht. 3 mm	Ht. 4 mm
Impressions transfers 				
Pick-up - short and long / Pop-up - short and long				
Healing screws 	Ø 4.2 mm Ø 5.5 mm	Ø 4.2 mm Ø 5.5 mm	Ø 4.2 mm Ø 5.5 mm	Ø 4.2 mm Ø 5.5 mm
Temporary abutments 	Ø 4.2 mm Ø 5.5 mm	Ø 4.2 mm Ø 5.5 mm	Ø 4.2 mm Ø 5.5 mm	Ø 4.2 mm Ø 5.5 mm
Direct implant castable abutment 	Ø 4.2 mm	Ø 4.2 mm	Ø 4.2 mm	Ø 4.2 mm

	Ht.1 mm	Ht. 2 mm	Ht. 3 mm	Ht. 4 mm
Standard abutments 	\varnothing 4.2 mm \varnothing 5.5 mm Angulations 0° - 7.5° - 15° - 22°	\varnothing 4.2 mm \varnothing 5.5 mm Angulations 0° - 7.5° - 15° - 22°	\varnothing 4.2 mm \varnothing 5.5 mm Angulations 0° - 7.5° - 15° - 22°	\varnothing 4.2 mm \varnothing 5.5 mm Angulations 0° - 7.5° - 15° - 22°
Short abutments 	\varnothing 4.2 mm \varnothing 5.5 mm Angulations 0° - 7.5° - 15° - 22°	\varnothing 4.2 mm \varnothing 5.5 mm Angulations 0° - 7.5° - 15° - 22°	\varnothing 4.2 mm \varnothing 5.5 mm Angulations 0° - 7.5° - 15° - 22°	\varnothing 4.2 mm \varnothing 5.5 mm Angulations 0° - 7.5° - 15° - 22°
Tibase WPCADCAM 	\varnothing 4.2 mm \varnothing 5.5 mm	\varnothing 4.2 mm \varnothing 5.5 mm	\varnothing 4.2 mm \varnothing 5.5 mm	\varnothing 4.2 mm \varnothing 5.5 mm
Conical abutments 	\varnothing 4.9 mm	\varnothing 4.9 mm Angulations 0° - 17° - 30°	\varnothing 4.9 mm Angulations 0° - 17° - 30°	\varnothing 4.9 mm Angulations 0° - 17° - 30°
Ball abutments 	-	\varnothing 3.6 mm	\varnothing 3.6 mm	\varnothing 3.6 mm



Biotech Dental
305, Allées de Craponne
13300 Salon de Provence - FRANCE



Tél. : +33 (0)4 90 44 60 60
Fax : +33 (0)4 90 44 60 61



info@biotech-dental.com



www.biotech-dental.com

کیان طب اطلس
KianTeb Atlas Co.



www.kianatlas.com

info@kianatlas.com



میدان آرژانتین، خیابان بخارست، کوچه هجدهم، پلاک ۶، طبقه ۳

تلفن : ۳-۸۸۷۳۵۰۵۱ فکس : ۵۳-۸۸۷۳۵۰۵۳

